

Project Name	Location	Item #	Quantity	Model #	AIA #	SIS #
--------------	----------	--------	----------	---------	-------	-------



FEATURES

- True Scientific series utilizes the most advanced technologies designed specifically for pharmacy, laboratory, and clinical applications.
- Energy efficient refrigeration system with innovative airflow technology specifically designed to maintain cabinet temperatures between 2°C - 8°C (36°F - 46°F).
- Self-Cleaning condenser technology eliminates the need for cleaning the condensing coil, reduces energy consumption, and helps maintain the tightest temperatures.
- Energy-efficient and environmentally friendly R290 hydrocarbon refrigerant.
- Temperature is measured in a glycol-filled bottle which is displayed on the control to simulate actual product temperature. In the event of a high/low-temperature alarm, door opening, temperature sensor failure or power failure, an alarm will be activated, helping to prevent product loss.
- Built in antimicrobial properties to protect the handle.
- Control has a battery back up feature and is locked at the factory to prevent inadvertent changes to the settings.

PERFORMANCE SPECIFICATIONS

Internal Volume (cu. ft.) (liters)	20	566
Temperature Range (min - max)	2°C	8°C
Temperature Set Point	5°C	
Temperature Uniformity	0.5°C	
Temperature Stability	0.8°C	
Energy Star Certified	Yes	
Energy Usage (kWh)	2.426	
Rejected Heat (BTU/hr)	757	

DIMENSIONS & CONSTRUCTION

External Dimensions W x D [†] x H (in.) (mm)	27 x 29 3/4 x 78 1/2 (686 x 756 x 1994)	
Number of Doors	1	
Door Type / Swing or Slide	Glass	Swing
Number of Shelves / Type of Shelves	7	7 full
Shelf Dimensions (W x D in.) / Shelf Capacity (lbs.)	Full Shelf 22 5/16 x 21 1/16 92	
Probe Port(s) / Diameter (in.)	1	0.625
Access Port(s) / Diameter (in.)	0	n/a
Internal Outlet	No	
Castors or Leg Levelers	Leg Levelers	
Crated Weight (lbs) (kg)	345	156
Refrigerant	R290	

ELECTRICAL DATA

Voltage / Frequency	115V	60Hz
Amperage	1.8A	
Plug Type	NEMA 5-15P	

Specifications subject to change without notice. Chart dimensions rounded up to the nearest 1/8" (millimeters rounded up to next whole number).

† Depth does not include 1 3/8" (35 mm) for door handle or 5/8" (16mm) for rear system mechanical components.



APPROVALS	AVAILABLE AT
-----------	--------------

STANDARD FEATURES

Refrigeration System

- Refrigeration system specifically designed to maintain cabinet temperatures between 2°C - 8°C (36°F - 46°F).
- Expertly designed airflow system controls temperature uniformity throughout the cabinet within +/- 1°C.
- Self-contained, capillary tube system using environmentally friendly R290 hydrocarbon refrigerant that has zero (0) ozone depletion potential (ODP), & 0.02 global warming potential (GWP).
- Reciprocating hermetic compressor paired with forced air copper tube, aluminum fin condenser.
- Automatic defrost.
- State-of-the-art, electronically communicated evaporator and condensing fan motors. Produces less heat, reduces energy consumption, and provides more efficient airflow.
- Operating conditions: Maximum relative humidity 60% for temperatures from 15°C - 32°C (59°F - 90°F).
- Indoor use only.
- CDC compliant.

Cabinet Construction

- **Exterior** - non-peel or chip white powder coated cold rolled steel; durable and permanent. White aluminum back.
- **Interior** - attractive, white aluminum interior liner with a stainless steel floor.
- **Insulation** - entire cabinet structure is foamed-in-place using a high density polyurethane insulation that has zero ozone depletion potential (ODP) and zero global warming potential (GWP).
- Probe access port in the back of the unit.
- LED interior lighting, provides more even lighting throughout the cabinet.
- Remote alarm contacts.

Shelving

- Powder-coated, perforated sheet metal shelves adjustable in 1/2 inch (13 mm) increments. 7 shelves total.
- Four (4) stainless steel shelf clips are included per shelf.

Door

- Low-E double pane thermal insulated glass assembly.
- Self closing doors, positive seal, torsion type closure system.
- Door ajar alarm.

- Door fitted with 12" (305mm) long extruded handle. Advanced technology with built-in antimicrobial properties protecting the handle.
- Door lock included.
- Magnetic door gaskets of one piece construction, removable without tools for ease of cleaning.

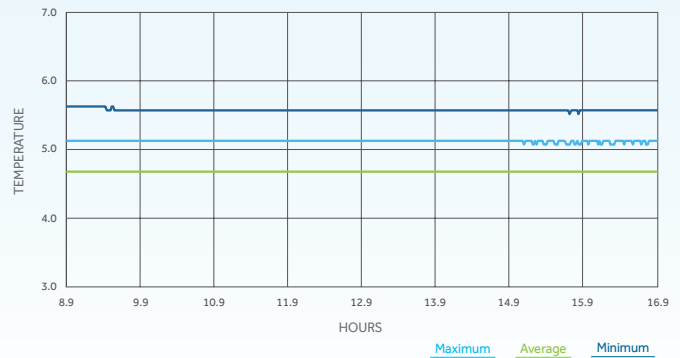
Electrical

- Unit completely pre-wired at factory and ready for final connection to a 115/60/1 phase, 15 amp dedicated outlet. Cord and plug set included.

Optional Features/Accessories (upcharge and lead times may apply)

- Stainless steel interior
- Stainless steel exterior
- Left door swing
- Additional shelves
- Wire shelves
- 2.5" diameter castors
- 6" standard legs
- 6" seismic flanged legs

UNIFORMITY & STABILITY



PLAN VIEW

