

| Project Name | Location | Item # | Quantity | Model # | AIA # | SIS # |
|--------------|----------|--------|----------|---------|-------|-------|
|--------------|----------|--------|----------|---------|-------|-------|



FEATURES

- True Scientific series utilizes the most advanced technologies designed specifically for pharmacy, laboratory, and clinical applications.
- Energy efficient refrigeration system with innovative airflow technology specifically designed to maintain cabinet temperatures between 2°C - 10°C (36°F - 50°F).
- Self-Cleaning condenser technology eliminates the need for cleaning the condensing coil, reduces energy consumption, and helps maintain the tightest temperatures.
- Energy-efficient and environmentally friendly R290 hydrocarbon refrigerant.
- Temperature is measured in a glycol-filled bottle which is displayed on the control to simulate actual product temperature. In the event of a high/low-temperature alarm, door opening, temperature sensor failure or power failure, an alarm will be activated, helping to prevent product loss.
- Built in antimicrobial properties to protect the handle.
- Control has a battery back up feature and is locked at the factory to prevent inadvertent changes to the settings.

PERFORMANCE SPECIFICATIONS

| | | |
|------------------------------------|-------|------|
| Usable Capacity (cu. ft.) (Liters) | 4.5 | 129 |
| Temperature Range (min - max) | 2°C | 10°C |
| Temperature Set Point | 5°C | |
| Temperature Uniformity | 0.9°C | |
| Temperature Stability | 1.2°C | |
| Energy Star Certified | Yes | |
| Energy Usage (kWh) | 0.78 | |
| Daily Rejected Heat (BTU/Hr) | 289 | |

DIMENSIONS & CONSTRUCTION

| | | |
|--|--|----------------------------------|
| External Dimensions W x D [†] x H (in.) (mm) | 24 x 24 ¾ x 31 ⅝ (610 x 629 x 803) | |
| Number of Doors | 1 | |
| Door Type / Swing or Slide | Solid | Swing |
| Number of Shelves / Type of Shelves | 4 | 2 full 1 half 1 floor rack |
| Shelf Dimensions (W x D in.) / Shelf Capacity (lbs.) | Full Shelf | |
| | 20 x 12 ⅞ | 53 |
| | Half Shelf | |
| Probe Port(s) / Diameter (in.) | 1 | 0.625 |
| | Floor Rack | |
| Access Port(s) / Diameter (in.) | 0 | n/a |
| Internal Outlet | No | |
| Castors or Leveling Feet | 4 integrated castors, 2 front leg leveling feet | |
| Crated Weight (lbs) (kg) | 182 | 83 |
| Refrigerant | R290 | |

ELECTRICAL DATA

| | | |
|---------------------|------------|------|
| Voltage / Frequency | 120V | 60Hz |
| Amperage | 1.36A | |
| Plug Type | NEMA 5-15P | |

Specifications subject to change without notice. Chart dimensions rounded up to the nearest ⅛" (millimeters rounded up to next whole number).

† Depth does not include 1 ⅝" (35 mm) for door handle or 1" (25 mm) for rear system mechanical components.



| | |
|-----------|--------------|
| APPROVALS | AVAILABLE AT |
|-----------|--------------|

STANDARD FEATURES

Refrigeration System

- Refrigeration system specifically designed to maintain cabinet temperatures between 2°C - 10°C (36°F - 50°F).
- Expertly designed airflow system controls temperature uniformity throughout the cabinet within +/- 1°C.
- Self-contained, capillary tube system using environmentally friendly R290 hydrocarbon refrigerant that has zero (0) ozone depletion potential (ODP), & 0.02 global warming potential (GWP).
- Reciprocating hermetic compressor paired with forced air copper tube, aluminum fin condenser.
- Automatic defrost.
- State-of-the-art, electronically communicated evaporator and condensing fan motors. Produces less heat, reduces energy consumption, and provides more efficient airflow.
- Operating conditions: Maximum relative humidity 60% for temperatures from 15°C - 32°C (59°F - 90°F).
- Indoor use only.
- CDC compliant.

Cabinet Construction

- **Exterior** - non-peel or chip white powder coated cold rolled steel; durable and permanent. Corrosion resistant GalFAN coated steel back.
- **Interior** - attractive, white aluminum interior liner with a stainless steel floor.
- **Insulation** - entire cabinet structure is foamed-in-place using a high density polyurethane insulation that has zero ozone depletion potential (ODP) and zero global warming potential (GWP).
- Probe access port in the back of the unit.
- LED interior lighting, provides more even lighting throughout the cabinet.
- Remote alarm contacts.

Shelving

- Powder-coated, perforated sheet metal shelves adjustable in 1/2 inch (13 mm) increments. 4 shelves total.
- Four (4) stainless steel shelf clips are included per shelf.

Door

- Non-peel or chip white powder coated cold rolled solid steel door.
- Self closing doors, positive seal, torsion type closure system.
- Door ajar alarm.

- Door fitted with 12" (305mm) long extruded handle. Advanced technology with built-in antimicrobial properties protecting the handle.
- Door lock included.
- Magnetic door gaskets of one piece construction, removable without tools for ease of cleaning.

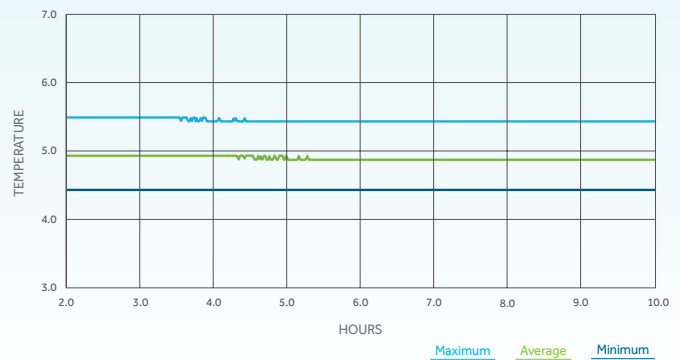
Electrical

- Unit completely pre-wired at factory and ready for final connection to a 115/60/1 phase, 15 amp dedicated outlet. Cord and plug set included.

Optional Features/Accessories (upcharge and lead times may apply)

- Stainless steel interior
- Stainless steel exterior
- Left door swing
- Additional shelves
- Wire shelves
- 2" diameter castors
- 6" standard legs
- 6" seismic flanged legs

UNIFORMITY & STABILITY



PLAN VIEW

