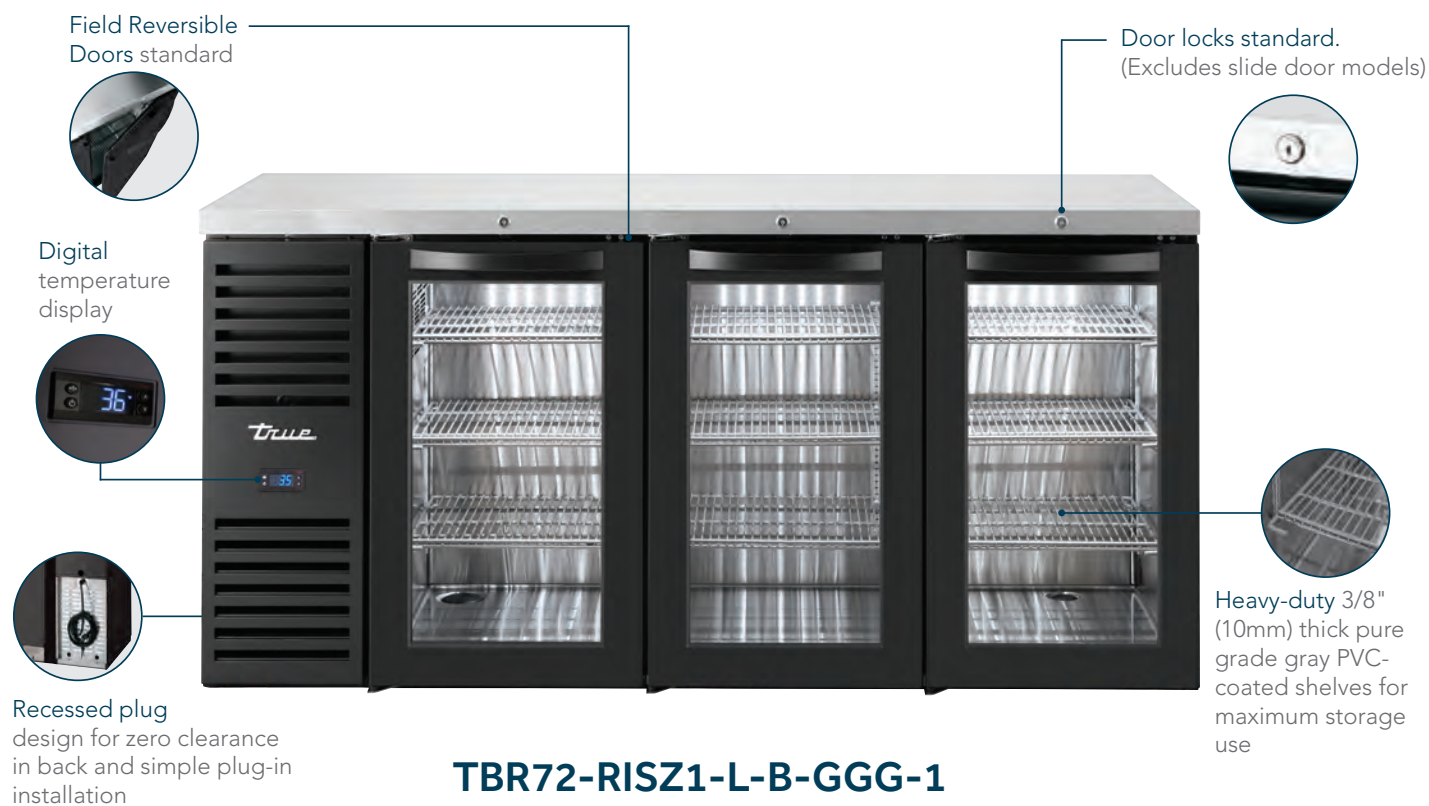


BAR REFRIGERATION



Bar Refrigeration | TBR

BAR REFRIGERATION REACH-IN & PASS-THRU, BLACK EXTERIOR *Solid & Glass, Swing & Slide Doors*



TBR48-RISZ1-L-B-SS-1



TBR60-RISZ1-L-B-GG-1



TBR72-RISZ1-L-B-SSS-1



TBR108-RISZ1-L-B-GGGG-1

Features/Benefits

- Maintains cold 33°F to 38°F (0.5°C to 3.3°C) product temperatures.
- Exterior - Black, powder coated cold-rolled steel with stainless steel countertop.
- Interior - stainless steel floor and sides.
- White LED Interior Lighting standard on solid door models. (14-color TruLumina® optional)
- NSF/ANSI Standard 7 compliant for open food product.
- Front Air Intake & Front Air Discharge.
- 24" (610mm) depth makes for easy placement in tight areas. Conserves valuable work space.
- Positive seal doors. (Excludes slide door models)
- Each cabinet designed to accommodate a variety of beer kegs.
- Leg levelers standard with 7 other castor/leg options for various heights.
- Three (3) interior access ports.
- All TBR models also available in right side compressor versions.

Glass door models only...

- Energy efficient, "Low-E", thermal glass doors.
- 14-color TruLumina® standard on all glass door models.

Pass-Thru models only...

- Designed for convenient front and rear access for serving.



TBR BAR REFRIGERATION REACH-IN, BLACK EXTERIOR

Model	# of Doors	# of Shelves	HP	Amps	Crated Weight lb. (kg.)	Cabinet Dimensions W D† H* (in)	Cabinet Dimensions W D† H* (mm)
SOLID SWING DOORS & LEFT SIDE REFRIGERATION SYSTEM							
TBR32-RISZ1-L-B-S-1	1	3	½	1.8	240 (109)	32 x 24¾ x 34¾	813 x 631 x 881
TBR36-RISZ1-L-B-S-1	1	3	½	1.8	255 (116)	36 x 24¾ x 34¾	914 x 631 x 881
TBR48-RISZ1-L-B-SS-1	2	6	½	1.8	320 (145)	48 x 24¾ x 34¾	1219 x 631 x 881
TBR52-RISZ1-L-B-SS-1	2	6	½	1.8	355 (161)	52 x 24¾ x 34¾	1321 x 631 x 881
TBR60-RISZ1-L-B-SS-1	2	6	¾	3.2	380 (173)	60 x 24¾ x 34¾	1524 x 631 x 881
TBR72-RISZ1-L-B-SSS-1	3	9	¾	3.2	435 (198)	72 x 24¾ x 34¾	1829 x 631 x 881
TBR84-RISZ1-L-B-SSS-1	3	9	¾	3.2	470 (214)	84 x 24¾ x 34¾	2134 x 631 x 881
TBR92-RISZ1-L-B-SSSS-1	4	12	¾	3.2	510 (232)	92 x 24¾ x 34¾	2337 x 631 x 881
TBR108-RISZ1-L-B-SSSS-1	4	12	¾	3.2	595 (270)	108 x 24¾ x 34¾	2744 x 631 x 881
GLASS SWING DOORS & LEFT SIDE REFRIGERATION SYSTEM							
TBR32-RISZ1-L-B-G-1	1	3	½	1.8	245 (112)	32 x 24¾ x 34¾	813 x 631 x 881
TBR36-RISZ1-L-B-G-1	1	3	½	1.8	285 (130)	36 x 24¾ x 34¾	915 x 631 x 881
TBR48-RISZ1-L-B-GG-1	2	6	½	1.8	335 (152)	48 x 24¾ x 34¾	1219 x 631 x 881
TBR52-RISZ1-L-B-GG-1	2	6	½	1.8	350 (159)	52 x 24¾ x 34¾	1321 x 631 x 881
TBR60-RISZ1-L-B-GG-1	2	6	¾	3.2	390 (177)	60 x 24¾ x 34¾	1524 x 631 x 881
TBR72-RISZ1-L-B-GGG-1	3	9	¾	3.2	445 (202)	72 x 24¾ x 34¾	1829 x 631 x 881
TBR84-RISZ1-L-B-GGG-1	3	9	¾	3.2	470 (214)	84 x 24¾ x 34¾	2134 x 631 x 881
TBR92-RISZ1-L-B-GGGG-1	4	12	¾	3.2	510 (232)	92 x 24¾ x 34¾	2337 x 631 x 881
TBR108-RISZ1-L-B-GGGG-1	4	12	¾	3.2	610 (277)	108 x 24¾ x 34¾	2744 x 631 x 881
GLASS SLIDE DOORS & LEFT SIDE REFRIGERATION SYSTEM							
TBR48-RISZ1-L-B-11-1	2	6	½	1.8	325 (148)	48 x 24¾ x 34¾	1219 x 631 x 881
TBR52-RISZ1-L-B-11-1	2	6	½	1.8	350 (159)	52 x 24¾ x 34¾	1321 x 631 x 881
TBR60-RISZ1-L-B-11-1	2	6	¾	3.2	385 (175)	60 x 24¾ x 34¾	1524 x 631 x 881
TBR72-RISZ1-L-B-111-1	3	9	¾	3.2	445 (202)	72 x 24¾ x 34¾	1829 x 631 x 881

† Depth does not include 1½" (35mm) for swing door handles, ¾" (16mm) for slide door handles.

TBR BAR REFRIGERATION PASS-THRU, BLACK EXTERIOR

Model	# of Doors	# of Shelves	HP	Amps	Crated Weight lb. (kg.)	Cabinet Dimensions W D† H* (in)	Cabinet Dimensions W D† H* (mm)
SOLID SWING DOORS (FRONT & REAR), LEFT SIDE REFRIGERATION SYSTEM							
TBR36-PTSZ1-L-B-S-S-1	2	3	½	1.8	265 (121)	36 x 27 x 34¾	915 x 684 x 881
TBR60-PTSZ1-L-B-SS-SS-1	4	6	¾	3.2	395 (180)	60 x 27 x 34¾	684 x 684 x 881
TBR84-PTSZ1-L-B-SSS-SSS-1	6	9	¾	3.2	470 (214)	84 x 27 x 34¾	2134 x 684 x 881
GLASS SWING DOORS (FRONT & REAR), LEFT SIDE REFRIGERATION SYSTEM							
TBR36-PTSZ1-L-B-G-G-1	2	3	½	1.8	265 (121)	36 x 27 x 34¾	915 x 684 x 881
TBR60-PTSZ1-L-B-GG-GG-1	4	6	¾	3.2	395 (180)	60 x 27 x 34¾	1524 x 684 x 881
TBR84-PTSZ1-L-B-GGG-GGG-1	3	9	¾	3.2	555 (252)	84 x 24¾ x 34¾	2134 x 631 x 881
GLASS SLIDE DOORS (FRONT & REAR), LEFT SIDE REFRIGERATION SYSTEM							
TBR60-PTSZ1-L-B-11-11-1	2	6	¾	3.2	395 (180)	60 x 24¾ x 34¾	1524 x 631 x 881

† Depth does not include 1½" (35mm) for swing door handles, ¾" (16mm) for slide door handles.

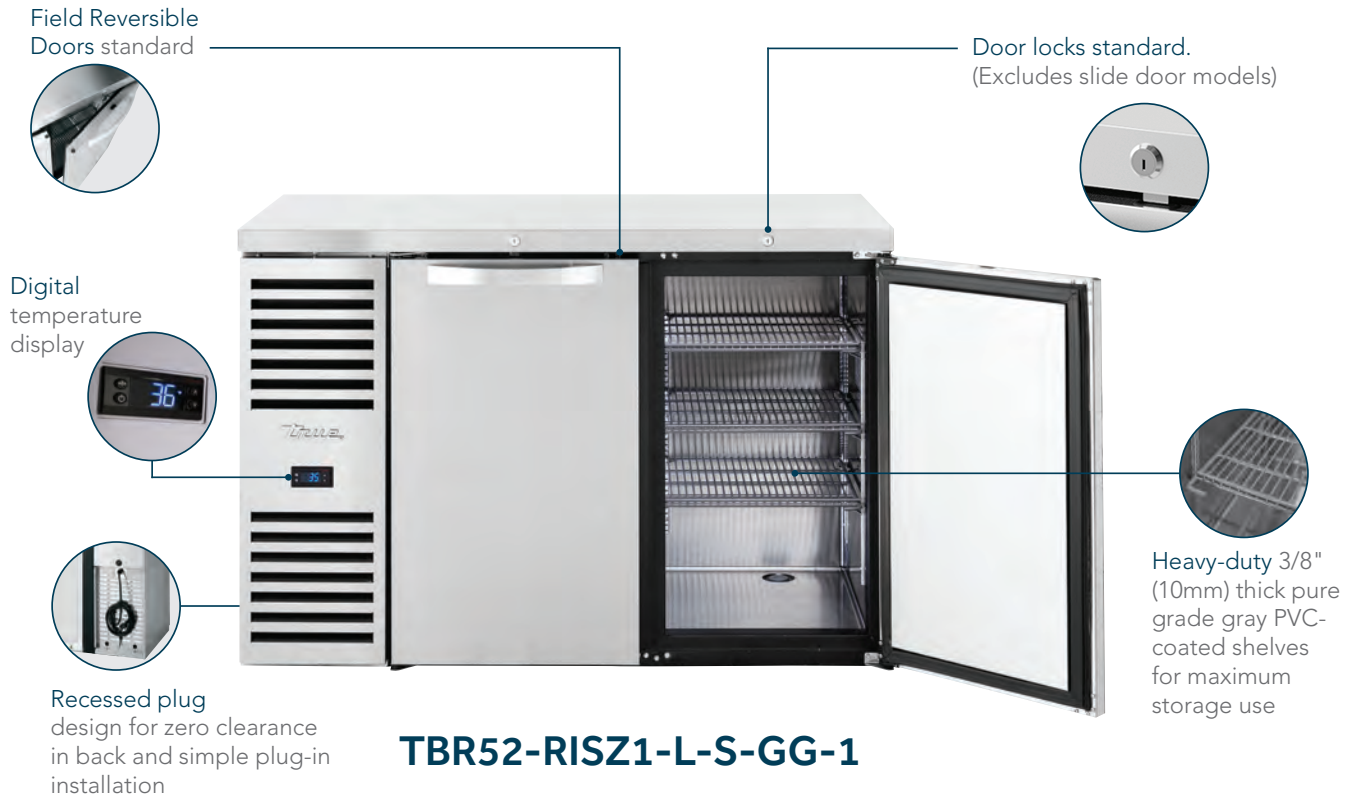
Environmentally friendly R290 hydrocarbon refrigeration system for the best in food preservation.



All dimensions are rounded up to the nearest 1/8" (whole millimeter) | Specifications subject to change without notice.

Bar Refrigeration | TBR

BAR REFRIGERATION REACH-IN & PASS-THRU, STAINLESS EXTERIOR *Solid & Glass, Swing & Slide Doors*



TBR48-RISZ1-L-S-GG-1



TBR52-RISZ1-L-S-11-1



TBR60-RISZ1-L-S-SS-1



TBR72-RISZ1-L-S-GGG-1

Features/Benefits

- Maintains cold 33°F to 38°F (0.5°C to 3.3°C) product temperatures.
 - Exterior - Stainless steel exterior for those who appreciate the value of stainless.
 - Interior - stainless steel floor and sides.
 - White LED Interior Lighting standard on solid door models. (optional 14-color TruLumina®)
 - NSF/ANSI Standard 7 compliant for open food product.
 - Front Air Intake & Front Air Discharge.
 - 24" (610mm) depth makes for easy placement in tight areas. Conserves valuable work space.
 - Positive seal doors. (Excludes slide door models)
 - Each cabinet designed to accommodate a variety of beer kegs. See our beer keg footprint brochure on our website.
 - Leg levelers standard with 7 other castor/leg options for various heights.
 - Three (3) interior access ports.
 - All TBR models also available in right side compressor versions.
- Glass door models only...**
- Energy efficient, "Low-E", thermal glass doors.
 - 14-color TruLumina® standard on all glass door models.
- Pass-Thru models only...**
- Designed for convenient front and rear access for serving.



TBR BAR REFRIGERATION REACH-IN, STAINLESS EXTERIOR

Model	# of Doors	# of Shelves	HP	Amps	Crated Weight lb. (kg.)	Cabinet Dimensions W D† H* (in)	Cabinet Dimensions W D† H* (mm)
SOLID SWING DOORS & LEFT SIDE REFRIGERATION SYSTEM							
TBR32-RISZ1-L-S-S-1	1	3	½	1.8	240 (109)	32 x 24¾ x 34¾	813 x 631 x 881
TBR36-RISZ1-L-S-S-1	1	3	½	1.8	290 (132)	36 x 24¾ x 34¾	914 x 631 x 881
TBR48-RISZ1-L-S-SS-1	2	6	½	1.8	335 (152)	48 x 24¾ x 34¾	1219 x 631 x 881
TBR52-RISZ1-L-S-SS-1	2	6	½	1.8	355 (161)	52 x 24¾ x 34¾	1321 x 631 x 881
TBR60-RISZ1-L-S-SS-1	2	6	¾	3.2	395 (180)	60 x 24¾ x 34¾	1524 x 631 x 881
TBR72-RISZ1-L-S-SSS-1	3	9	¾	3.2	440 (200)	72 x 24¾ x 34¾	1829 x 631 x 881
TBR84-RISZ1-L-S-SSS-1	3	9	¾	3.2	470 (214)	84 x 24¾ x 34¾	2134 x 631 x 881
TBR92-RISZ1-L-S-SSSS-1	4	12	¾	3.2	510 (232)	92 x 24¾ x 34¾	2337 x 631 x 881
TBR108-RISZ1-L-S-SSSS-1	4	12	¾	3.2	630 (286)	108 x 24¾ x 34¾	2744 x 631 x 881
GLASS SWING DOORS & LEFT SIDE REFRIGERATION SYSTEM							
TBR32-RISZ1-L-S-G-1	1	3	½	1.8	290 (132)	32 x 24¾ x 34¾	813 x 631 x 881
TBR36-RISZ1-L-S-G-1	1	3	½	1.8	290 (132)	36 x 24¾ x 34¾	915 x 631 x 881
TBR48-RISZ1-L-S-GG-1	2	6	½	1.8	335 (152)	48 x 24¾ x 34¾	1219 x 631 x 881
TBR52-RISZ1-L-S-GG-1	2	6	½	1.8	365 (166)	52 x 24¾ x 34¾	1321 x 631 x 881
TBR60-RISZ1-L-S-GG-1	2	6	¾	3.2	395 (180)	60 x 24¾ x 34¾	1524 x 631 x 881
TBR72-RISZ1-L-S-GGG-1	3	9	¾	3.2	440 (200)	72 x 24¾ x 34¾	1829 x 631 x 881
TBR84-RISZ1-L-S-GGG-1	3	9	¾	3.2	470 (214)	84 x 24¾ x 34¾	2134 x 631 x 881
TBR92-RISZ1-L-S-GGGG-1	4	12	¾	3.2	510 (232)	92 x 24¾ x 34¾	2337 x 631 x 881
TBR108-RISZ1-L-S-GGGG-1	4	12	¾	3.2	610 (277)	108 x 24¾ x 34¾	2744 x 631 x 881
GLASS SLIDE DOORS & LEFT SIDE REFRIGERATION SYSTEM							
TBR48-RISZ1-L-S-11-1	2	6	½	1.8	330 (150)	48 x 24¾ x 34¾	1219 x 631 x 881
TBR52-RISZ1-L-S-11-1	2	6	½	1.8	350 (159)	52 x 24¾ x 34¾	1321 x 631 x 881
TBR60-RISZ1-L-S-11-1	2	6	¾	3.2	395 (180)	60 x 24¾ x 34¾	1524 x 631 x 881
TBR72-RISZ1-L-S-111-1	3	9	¾	3.2	450 (205)	72 x 24¾ x 34¾	1829 x 631 x 881

† Depth does not include 1½" (35mm) for swing door handles, ¾" (16mm) for slide door handles.

TBR BAR REFRIGERATION PASS-THRU, STAINLESS EXTERIOR

Model	# of Doors	# of Shelves	HP	Amps	Crated Weight lb. (kg.)	Cabinet Dimensions W D† H* (in)	Cabinet Dimensions W D† H* (mm)
SOLID SWING DOORS (FRONT & REAR), LEFT SIDE REFRIGERATION SYSTEM							
TBR36-PTSZ1-L-S-S-S-1	2	3	½	1.8	290 (132)	36 x 27 x 34¾	915 x 684 x 881
TBR60-PTSZ1-L-S-SS-SS-1	4	6	¾	3.2	395 (180)	60 x 27 x 34¾	1524 x 684 x 881
TBR84-PTSZ1-L-S-SSS-SSS-1	6	9	¾	3.2	470 (214)	84 x 27 x 34¾	2134 x 684 x 881
GLASS SWING DOORS (FRONT & REAR), LEFT SIDE REFRIGERATION SYSTEM							
TBR36-PTSZ1-L-S-G-G-1	2	3	½	1.8	290 (132)	36 x 27 x 34¾	915 x 684 x 881
TBR60-PTSZ1-L-S-GG-GG-1	4	6	¾	3.2	395 (180)	60 x 27 x 34¾	1524 x 684 x 881
TBR84-PTSZ1-L-S-GGG-GGG-1	3	9	¾	3.2	535 (243)	84 x 24¾ x 34¾	2134 x 631 x 881
GLASS SLIDE DOORS (FRONT & REAR), LEFT SIDE REFRIGERATION SYSTEM							
TBR60-PTSZ1-L-S-11-11-1	2	6	¾	3.2	395 (180)	60 x 24¾ x 34¾	1524 x 631 x 881

† Depth does not include 1½" (35mm) for swing door handles, ¾" (16mm) for slide door handles.

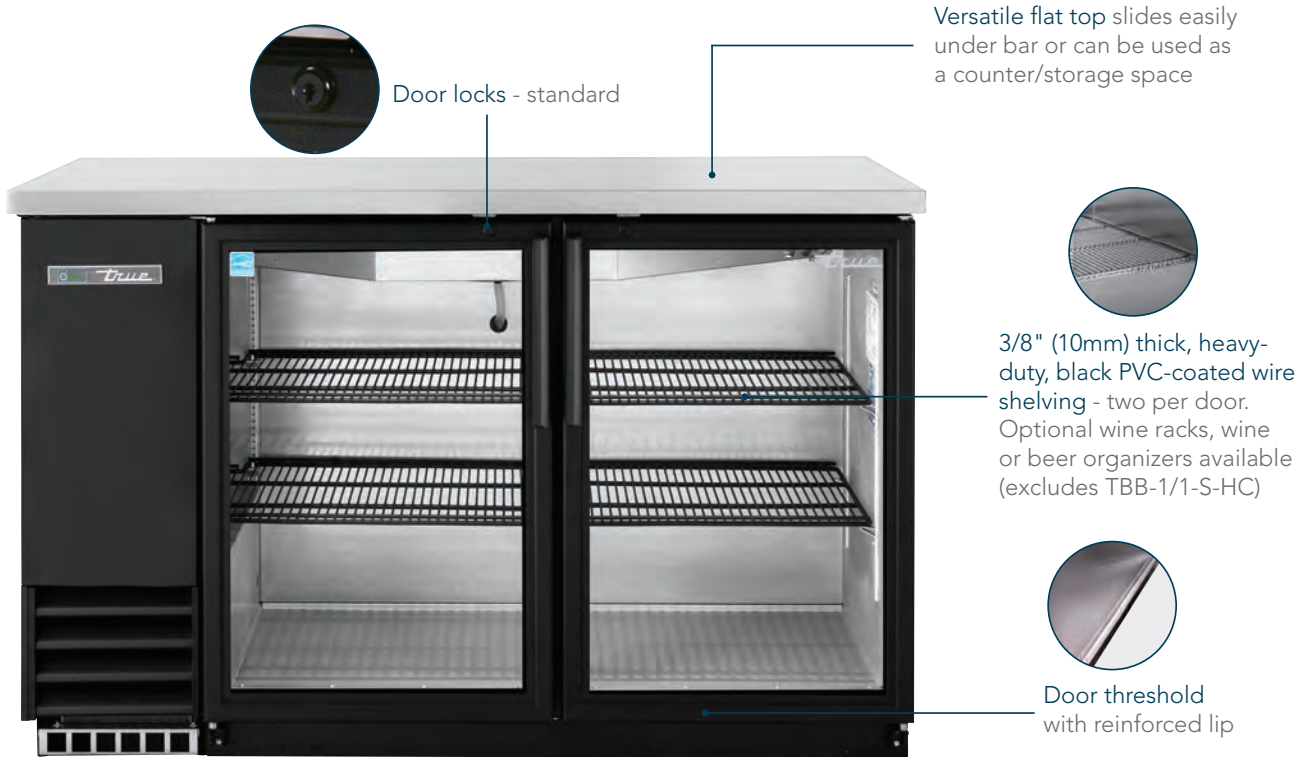
Environmentally friendly R290 hydrocarbon refrigeration system for the best in food preservation.



All dimensions are rounded up to the nearest 1/8" (whole millimeter) | Specifications subject to change without notice.

Bar Refrigeration | TBB

BACK BAR REACH-IN, STAINLESS TOP, BLACK & STAINLESS EXTERIOR *Solid & Glass, Swing Doors*



TBB-2G-HC-LD



TBB-1-HC



TBB-2G-S-HC



TBB-3G-HC



TBB-4PT-S

Features/Benefits

- Maintains cold 33°F to 38°F (0.5°C to 3.3°C) product temperatures.
- Exterior - Black, powder coated cold-rolled steel with stainless steel countertop.
- Interior - Stainless steel floor with 1/2" (13mm) lip & heavy galvanized steel walls.
- Recessed handles on solid door models.
- LED interior lighting.
- Air vents on side to maximize flow of fresh air through condenser.
- Positive seal doors.
- Self-contained installation.
- Available with optional legs or 2 1/2" (64mm) or 4" (102mm) diameter castors (TBB-1 & TBB-1-S: 4" diameter castors standard equipment; 2 1/2" (64mm) diameter castors & legs not available).

Glass door models have...

- Energy efficient, "Low-E", thermal glass doors.
- Extruded, aluminum door frames on glass doors.
- LED interior lighting provides more even lighting throughout the cabinet. Safety shielded.

Pass-Thru models have...

- Designed for convenient front and rear access for serving.

Stainless Steel models have...

- Heavy duty stainless steel exterior and countertop.



TBB BACK BAR REACH-IN, STAINLESS TOP, BLACK EXTERIOR

Model	# of Doors	# of Shelves	HP	Amps	Crated Weight lb. (kg.)	Cabinet Dimensions W D† H* (in)	Cabinet Dimensions W D† H* (mm)
SOLID SWING DOORS							
TBB-1-HC	1	2	1/10	1.4	210 (96)	23½ x 31¾ x 38¾	597 x 810 x 985
TBB-2-HC	2	4	¼	2.8	360 (164)	58¾ x 27¾ x 37	1496 x 705 x 940
TBB-3-HC	2	4	¼	2.8	400 (182)	69½ x 27¾ x 37	1756 x 705 x 940
TBB-4-HC	3	6	¼	2.8	485 (220)	90¾ x 27¾ x 37	2296 x 705 x 940
GLASS SWING DOORS							
TBB-2G-HC-LD	2	4	¼	2.8	365 (166)	58¾ x 27¾ x 37	1496 x 705 x 940
TBB-3G-HC-LD	2	4	¼	2.8	440 (200)	69½ x 27¾ x 37	1756 x 705 x 940
TBB-4G-HC-LD	3	6	¼	2.8	595 (270)	90¾ x 27¾ x 37	2296 x 705 x 940

† Depth does not include 1½" (35mm) for door handle (glass door models) or 1" (26mm) for rear bumpers (excludes TBB-1-HC).
 note: TBB-2G-HC-LD not available with door locks.

TBB BACK BAR PASS-THRU, STAINLESS TOP, BLACK EXTERIOR

Model	# of Doors	# of Shelves	HP	Amps	Crated Weight lb. (kg.)	Cabinet Dimensions W D† H* (in)	Cabinet Dimensions W D† H* (mm)
SOLID SWING DOORS (FRONT & REAR)							
TBB-4PT-HC	3 fr / 3 bk	6	¼	2.9	580 (263)	90¾ x 31 x 37	2296 x 788 x 940

TBB BACK BAR REACH-IN, STAINLESS TOP, STAINLESS EXTERIOR

Model	# of Doors	# of Shelves	HP	Amps	Crated Weight lb. (kg.)	Cabinet Dimensions W D† H* (in)	Cabinet Dimensions W D† H* (mm)
SOLID SWING DOORS							
TBB-1-S-HC	1	2	1/10	1.4	210 (96)	23½ x 31¾ x 38¾	597 x 810 x 985
TBB-2-S-HC	2	4	¼	2.8	385 (175)	58¾ x 27¾ x 37	1496 x 705 x 940
TBB-3-S-HC	2	4	¼	2.8	415 (189)	69½ x 27¾ x 37	1756 x 705 x 940
TBB-4-S-HC	3	6	¼	2.8	530 (241)	90¾ x 27¾ x 37	2296 x 705 x 940
GLASS SWING DOORS							
TBB-2G-S-HC-LD	2	4	¼	2.8	395 (180)	58¾ x 27¾ x 37	1496 x 705 x 940
TBB-3G-S-HC-LD	2	4	¼	2.8	440 (200)	69½ x 27¾ x 37	1756 x 705 x 940
TBB-4G-S-HC-LD	3	6	¼	2.8	595 (270)	90¾ x 27¾ x 37	2296 x 705 x 940

† Depth does not include 1½" (35mm) for door handle (glass door models) or 1" (26mm) for rear bumpers (excludes TBB-1-S-HC).
 note: TBB-2G-S-HC-LD not available with door locks.

TBB BACK BAR PASS-THRU, STAINLESS TOP, STAINLESS EXTERIOR

Model	# of Doors	# of Shelves	HP	Amps	Crated Weight lb. (kg.)	Cabinet Dimensions W D† H* (in)	Cabinet Dimensions W D† H* (mm)
SOLID SWING DOORS (FRONT & REAR)							
TBB-4PT-S-HC	3 fr / 3 bk	6	¼	2.9	585 (266)	90¾ x 31 x 37	2296 x 788 x 940

Environmentally friendly R290 hydrocarbon refrigeration system for the best in food preservation.



All dimensions are rounded up to the nearest 1/8" (whole millimeter) | Specifications subject to change without notice.

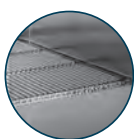
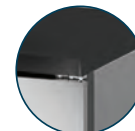
Bar Refrigeration | TBB24

BACK BAR REACH-IN, STAINLESS TOP, BLACK & STAINLESS EXTERIOR *Solid & Glass, Swing Doors*



Door locks - standard

TBB24 models feature a finished stainless steel top (SFT) providing an excellent work or storage area, or a black sub-top (BST) feature designed to slide under existing cabinetry providing a built-in look



3/8" (10mm) thick, heavy-duty, PVC-coated wire shelving. Two shelves per door on two door models. Three door models feature two shelves for the right door and two long shelves which span both the left and center doors



TBB24-48-2G-Z1-SFT-B-1



TBB24-48-2S-Z1-BST-S-1



TBB24-60-2S-Z1-SFT-B-1



TBB24-60-2G-Z1-SFT-S-1



TBB24-72-3G-Z1-BST-B-1

Features/Benefits

- Maintains cold 33°F to 38°F (0.5°C to 3.3°C) product temperatures.
- 24" (610mm) depth makes for easy placement in tight areas. Conserves valuable work space.
- Exterior - Black, powder coated cold-rolled steel with stainless steel countertop or black sub-top..
- Interior - Stainless steel floor with heavy gauge galvanized steel walls.
- Recessed handles on solid door models.
- Interior LED lighting.
- NSF/ANSI Standard 7 compliant for packaged and bottle product.
- Air vents on side to maximize flow of fresh air through condenser.
- Optional wine racks, wine or beer organizers available.
- Positive seal doors.
- Self-contained system.
- Ideal for bottle beer or can accommodate a variety of beer kegs.
- Available with optional legs or 2½" (64mm) or 4" (102mm) diameter castors.

Glass door models have...

- Energy efficient, "Low-E", thermal glass doors.
- Extruded, aluminum door frames on glass doors.
- Glass doors fitted with flat top door handles.

Stainless Steel models have...

- Heavy duty stainless steel exterior and countertop.



TBB24 BACK BAR REACH-IN, STAINLESS FINISHED TOP, BLACK EXTERIOR

Model	# of Doors	# of Shelves	HP	Amps	Crated Weight lb. (kg.)	Cabinet Dimensions W D† H* (in)	Cabinet Dimensions W D† H* (mm)
SOLID SWING DOORS							
TBB24-48-2S-Z1-SFT-B-1	2	4	1/5	1.8	290 (132)	48 7/8 x 24 7/8 x 34 3/4	1220 x 632 x 882
TBB24-60-2S-Z1-SFT-B-1	2	4	1/4	3.2	345 (157)	60 7/8 x 24 7/8 x 34 3/4	1525 x 632 x 882
TBB24-72-3S-Z1-SFT-B-1	3	6	1/4	3.2	415 (189)	72 7/8 x 24 7/8 x 34 3/4	1829 x 632 x 882
GLASS SWING DOORS							
TBB24-48-2G-Z1-SFT-B-1	2	4	1/5	1.8	290 (132)	48 7/8 x 24 7/8 x 34 3/4	1220 x 632 x 882
TBB24-60-2G-Z1-SFT-B-1	2	4	1/4	3.2	345 (157)	60 7/8 x 24 7/8 x 34 3/4	1525 x 632 x 882
TBB24-72-3G-Z1-SFT-B-1	3	6	1/4	3.2	415 (189)	72 7/8 x 24 7/8 x 34 3/4	1829 x 632 x 882

† Depth does not include 1 1/2" (39mm) for flat top door handle (glass door models).

* Height does not include 1/4" (7mm) for leg levelers.

TBB24 BACK BAR REACH-IN, STAINLESS FINISHED TOP, STAINLESS EXTERIOR

Model	# of Doors	# of Shelves	HP	Amps	Crated Weight lb. (kg.)	Cabinet Dimensions W D† H* (in)	Cabinet Dimensions W D† H* (mm)
SOLID SWING DOORS							
TBB24-48-2S-Z1-SFT-S-1	2	4	1/5	1.8	290 (132)	48 7/8 x 24 7/8 x 34 3/4	1220 x 632 x 882
TBB24-60-2S-Z1-SFT-S-1	2	4	1/4	3.2	345 (157)	60 7/8 x 24 7/8 x 34 3/4	1525 x 632 x 882
TBB24-72-3S-Z1-SFT-S-1	3	6	1/4	3.2	415 (189)	72 7/8 x 24 7/8 x 34 3/4	1829 x 632 x 882
GLASS SWING DOORS							
TBB24-48-2G-Z1-SFT-S-1	2	4	1/5	1.8	290 (132)	48 7/8 x 24 7/8 x 34 3/4	1220 x 632 x 882
TBB24-60-2G-Z1-SFT-S-1	2	4	1/4	3.2	345 (157)	60 7/8 x 24 7/8 x 34 3/4	1525 x 632 x 882
TBB24-72-3G-Z1-SFT-S-1	3	6	1/4	3.2	415 (189)	72 7/8 x 24 7/8 x 34 3/4	1829 x 632 x 882

† Depth does not include 1 1/2" (39mm) for flat top door handle (glass door models).

* Height does not include 1/4" (7mm) for leg levelers.

TBB24 BACK BAR REACH-IN, BLACK SUB-TOP, BLACK EXTERIOR

Model	# of Doors	# of Shelves	HP	Amps	Crated Weight lb. (kg.)	Cabinet Dimensions W D† H* (in)	Cabinet Dimensions W D† H* (mm)
SOLID SWING DOORS							
TBB24-48-2S-Z1-BST-B-1	2	4	1/5	1.8	290 (132)	48 7/8 x 24 7/8 x 34 1/4	1220 x 632 x 870
TBB24-60-2S-Z1-BST-B-1	2	4	1/4	3.2	345 (157)	60 7/8 x 24 7/8 x 34 1/4	1525 x 632 x 870
TBB24-72-3S-Z1-BST-B-1	3	6	1/4	3.2	415 (189)	72 7/8 x 24 7/8 x 34 1/4	1829 x 632 x 870
GLASS SWING DOORS							
TBB24-48-2G-Z1-BST-B-1	2	4	1/5	1.8	290 (132)	48 7/8 x 24 7/8 x 34 1/4	1220 x 632 x 870
TBB24-60-2G-Z1-BST-B-1	2	4	1/4	3.2	345 (157)	59 7/8 x 23 3/4 x 34 1/4	1521 x 616 x 870
TBB24-72-3G-Z1-BST-B-1	3	6	1/4	3.2	415 (189)	72 7/8 x 24 7/8 x 34 1/4	1829 x 632 x 870

† Depth does not include 1 1/2" (39mm) for flat top door handle (glass door models).

* Height does not include 1/4" (7mm) for leg levelers.

TBB24 BACK BAR REACH-IN, BLACK SUB-TOP, STAINLESS EXTERIOR

Model	# of Doors	# of Shelves	HP	Amps	Crated Weight lb. (kg.)	Cabinet Dimensions W D† H* (in)	Cabinet Dimensions W D† H* (mm)
SOLID SWING DOORS							
TBB24-48-2S-Z1-BST-S-1	2	4	1/5	1.8	290 (132)	48 7/8 x 24 7/8 x 34 1/4	1220 x 632 x 870
TBB24-60-2S-Z1-BST-S-1	2	4	1/4	3.2	345 (157)	60 7/8 x 24 7/8 x 34 1/4	1525 x 632 x 870
TBB24-72-3S-Z1-BST-S-1	3	6	1/4	3.2	415 (189)	72 7/8 x 24 7/8 x 34 1/4	1829 x 632 x 870
GLASS SWING DOORS							
TBB24-48-2G-Z1-BST-S-1	2	4	1/5	1.8	290 (132)	48 7/8 x 24 7/8 x 34 1/4	1220 x 632 x 870
TBB24-60-2G-Z1-BST-S-1	2	4	1/4	3.2	345 (157)	60 7/8 x 24 7/8 x 34 1/4	1525 x 632 x 870
TBB24-72-3G-Z1-BST-S-1	3	6	1/4	3.2	415 (189)	72 7/8 x 24 7/8 x 34 1/4	1829 x 632 x 870

† Depth does not include 1 1/2" (39mm) for flat top door handle (glass door models).

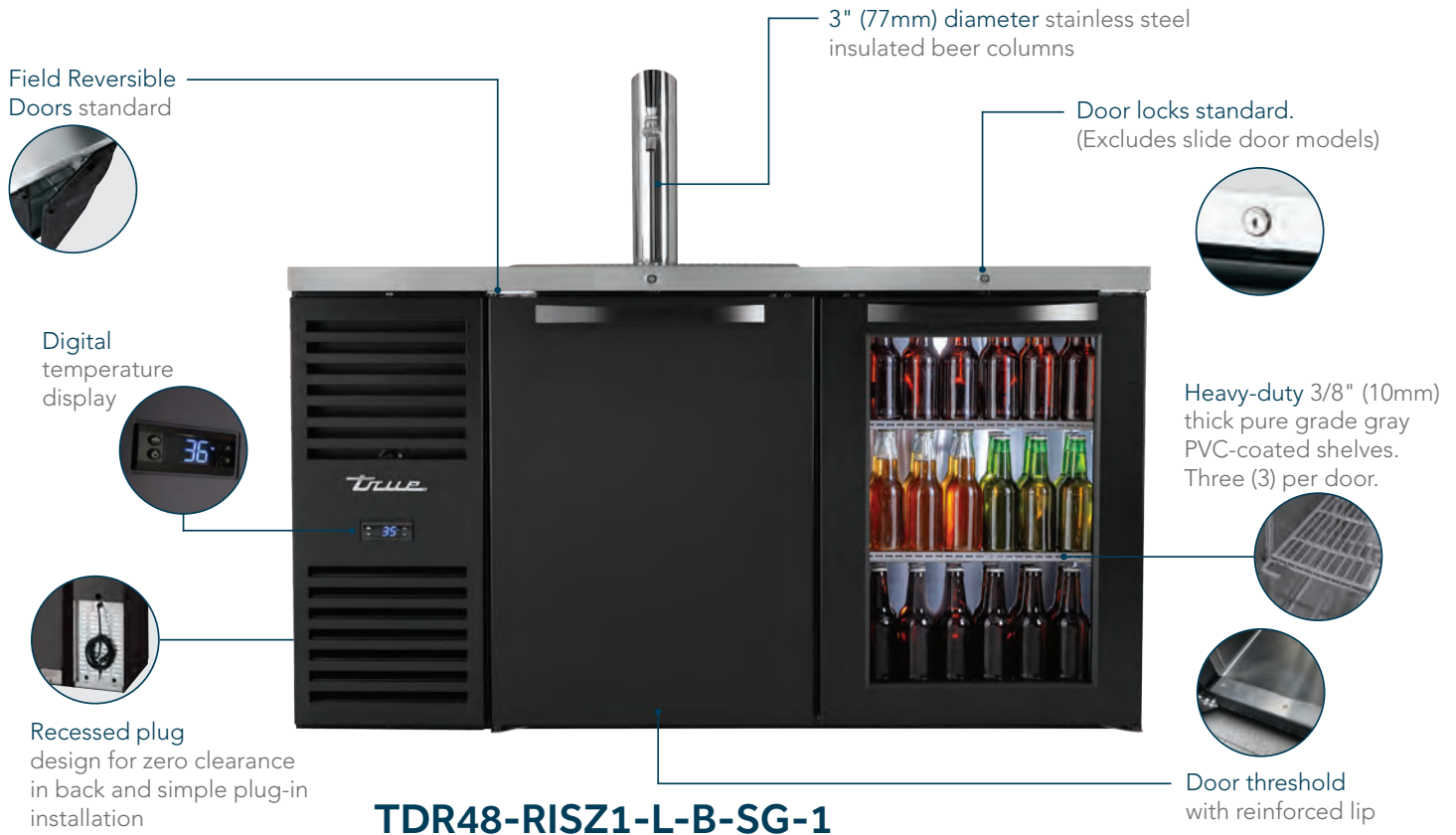
* Height does not include 1/4" (7mm) for leg levelers.

Environmentally friendly R290 hydrocarbon refrigeration system for the best in food preservation.



Bar Refrigeration | TDR

DRAFT REFRIGERATION REACH-IN & PASS-THRU, BLACK EXTERIOR *Solid & Glass, Swing Doors*



TDR48-RISZ1-L-B-SG-1



TDR32-RISZ1-L-B-S-1



TDR60-RISZ1-L-B-SS-1



TDR84-RISZ1-L-B-SSS-1



TDR108-RISZ1-L-B-SSSS-1

Features/Benefits

- Maintains cold 33°F to 38°F (0.5°C to 3.3°C) product temperatures.
 - Exterior - Black, powder coated cold-rolled steel with stainless steel countertop.
 - Interior - stainless steel floor and sides.
 - Insulated and chilled draft columns.
 - Fan motors direct large volume of cold air into draft columns.
 - White LED Interior Lighting for excellent visibility. (optional 14-color TruLumina® on glass and solid door combos)
 - NSF/ANSI Standard 7 compliant for packaged and bottled product.
 - Zero clearance recessed plug and front breathing.
 - 24" (610mm) depth makes for easy placement in tight areas. Conserves valuable work space.
 - Positive seal doors.
 - Each cabinet designed to accommodate a variety of beer kegs. See keg brochure on website for details.
 - Leg levelers standard with 7 other castor/leg options for various heights.
 - Three (3) interior access ports.
 - All TDR models also available in right side compressor versions.
- Glass door models only...**
- Shelves included.
 - Energy efficient, "Low-E", thermal glass doors.
 - 14-color TruLumina® lighting standard.
- Pass-Thru models only...**
- Designed for convenient front and rear access for serving.



TDR DRAFT REFRIGERATION, BLACK EXTERIOR

Model	# of Doors	# of Shelves	HP	Amps	Crated Weight lb. (kg.)	Cabinet Dimensions W D† H* (in)	Cabinet Dimensions W D† H* (mm)
SOLID SWING DOORS & LEFT SIDE REFRIGERATION SYSTEM							
TDR32-RISZ1-L-B-S-1	1	0	½	1.8	240 (109)	32 x 24⅞ x 34¾	813 x 631 x 881
TDR36-RISZ1-L-B-S-1	1	0	½	1.8	270 (123)	36 x 24⅞ x 34¾	914 x 631 x 881
TDR48-RISZ1-L-B-SS-1	2	0	½	1.8	310 (141)	48 x 24⅞ x 34¾	1219 x 631 x 881
TDR52-RISZ1-L-B-SS-1	2	0	½	1.8	320 (146)	52 x 24⅞ x 34¾	1321 x 631 x 881
TDR60-RISZ1-L-B-SS-1	2	0	¼	3.2	330 (150)	60 x 24⅞ x 34¾	1524 x 631 x 881
TDR72-RISZ1-L-B-SSS-1	3	0	¼	3.2	395 (180)	72 x 24⅞ x 34¾	1829 x 631 x 881
TDR84-RISZ1-L-B-SSS-1	3	0	¼	3.2	440 (200)	84 x 24⅞ x 34¾	2134 x 631 x 881
TDR92-RISZ1-L-B-SSSS-1	4	0	¼	3.2	475 (215)	92 x 24⅞ x 34¾	2337 x 631 x 881
TDR108-RISZ1-L-B-SSSS-1	4	0	¼	3.2	535 (243)	108 x 24⅞ x 34¾	2744 x 631 x 881
COMBO SOLID & GLASS SWING DOORS, LEFT SIDE REFRIGERATION SYSTEM							
TDR48-RISZ1-L-B-SG-1	2	3	½	1.8	320 (146)	48 x 24⅞ x 34¾	1219 x 631 x 881
TDR52-RISZ1-L-B-SG-1	2	3	½	1.8	365 (166)	52 x 24⅞ x 34¾	1321 x 631 x 881

† Depth does not include 1½" (39mm) for swing door handles.

* Height does not include 15¾" (400mm) for draft tower.

TDR DRAFT REFRIGERATION PASS-THRU, BLACK EXTERIOR

Model	# of Doors	# of Shelves	HP	Amps	Crated Weight lb. (kg.)	Cabinet Dimensions W D† H* (in)	Cabinet Dimensions W D† H* (mm)
SOLID SWING DOORS & LEFT SIDE REFRIGERATION SYSTEM							
TDR36-PTSZ1-L-B-S-S-1	2	0	½	1.8	270 (122)	36 x 24⅞ x 34¾	914 x 631 x 881
TDR60-PTSZ1-L-B-SS-SS-1	4	0	¼	3.2	365 (166)	60 x 24⅞ x 34¾	1524 x 631 x 881
TDR84-PTSZ1-L-B-SSS-SSS-1	6	0	¼	3.2	490 (222)	84 x 24⅞ x 34¾	2134 x 631 x 881

† Depth does not include 1½" (39mm) for swing door handles.

* Height does not include 15¾" (400mm) for draft tower.

Environmentally friendly R290 hydrocarbon refrigeration system for the best in food preservation.



All dimensions are rounded up to the nearest 1/8" (whole millimeter) | Specifications subject to change without notice.

Bar Refrigeration | TDR

DRAFT REFRIGERATION REACH-IN & PASS-THRU, STAINLESS EXTERIOR *Solid & Glass, Swing Doors*



TDR36-RISZ1-L-S-S-1



TDR52-RISZ1-L-S-SG-1



TDR72-RISZ1-L-S-SSS-1



TDR92-RISZ1-L-S-SSSS-1

Features/Benefits

- Maintains cold 33°F to 38°F (0.5°C to 3.3°C) product temperatures.
 - Exterior - Black, powder coated cold-rolled steel with stainless steel countertop.
 - Interior - stainless steel floor and sides.
 - Insulated and chilled draft columns.
 - Fan motors direct large volume of cold air into draft columns.
 - White LED Interior Lighting for excellent visibility. (optional 14-color TruLumina® on glass and solid door combos)
 - NSF/ANSI Standard 7 compliant for packaged and bottled product.
 - Zero clearance recessed plug and front breathing.
 - 24" (610mm) depth makes for easy placement in tight areas. Conserves valuable work space.
 - Positive seal doors.
 - Each cabinet designed to accommodate a variety of beer kegs. See keg brochure on website for details.
 - Leg levelers standard with 7 other castor/leg options for various heights.
 - Three (3) interior access ports.
 - All TDR models also available in right side compressor versions.
- Glass door models only...**
- Shelves included.
 - Energy efficient, "Low-E", thermal glass doors.
 - 14-color TruLumina® lighting standard.
- Pass-Thru models only...**
- Designed for convenient front and rear access for serving.



TDR DRAFT REFRIGERATION REACH-IN, STAINLESS EXTERIOR

Model	# of Doors	# of Shelves	HP	Amps	Crated Weight lb. (kg.)	Cabinet Dimensions W D† H* (in)	Cabinet Dimensions W D† H* (mm)
SOLID SWING DOORS & LEFT SIDE REFRIGERATION SYSTEM							
TDR32-RISZ1-L-S-S-1	1	0	½	1.8	240 (109)	32 x 24 ⁷ / ₈ x 34 ³ / ₄	813 x 631 x 881
TDR36-RISZ1-L-S-S-1	1	0	½	1.8	270 (123)	36 x 24 ⁷ / ₈ x 34 ³ / ₄	914 x 631 x 881
TDR48-RISZ1-L-S-SS-1	2	0	½	1.8	320 (146)	48 x 24 ⁷ / ₈ x 34 ³ / ₄	1219 x 631 x 881
TDR52-RISZ1-L-S-SS-1	2	0	½	1.8	355 (161)	52 x 24 ⁷ / ₈ x 34 ³ / ₄	1321 x 631 x 881
TDR60-RISZ1-L-S-SS-1	2	0	¼	3.2	330 (150)	60 x 24 ⁷ / ₈ x 34 ³ / ₄	1524 x 631 x 881
TDR72-RISZ1-L-S-SSS-1	3	0	¼	3.2	395 (179)	72 x 24 ⁷ / ₈ x 34 ³ / ₄	1829 x 631 x 881
TDR84-RISZ1-L-S-SSS-1	3	0	¼	3.2	440 (200)	84 x 24 ⁷ / ₈ x 34 ³ / ₄	2134 x 631 x 881
TDR92-RISZ1-L-S-SSSS-1	4	0	¼	3.2	475 (215)	92 x 24 ⁷ / ₈ x 34 ³ / ₄	2337 x 631 x 881
TDR108-RISZ1-L-S-SSSS-1	4	0	¼	3.2	535 (243)	108 x 24 ⁷ / ₈ x 34 ³ / ₄	2744 x 631 x 881
COMBO SOLID & GLASS SWING DOORS, LEFT SIDE REFRIGERATION SYSTEM							
TDR48-RISZ1-L-S-SG-1	2	3	½	1.8	330 (150)	48 x 24 ⁷ / ₈ x 34 ³ / ₄	1219 x 631 x 881
TDR52-RISZ1-L-S-SG-1	2	3	½	1.8	365 (166)	52 x 24 ⁷ / ₈ x 34 ³ / ₄	1321 x 631 x 881

† Depth does not include 1½" (39mm) for swing door handles.

* Height does not include 15¾" (400mm) for draft tower.

TDR DRAFT REFRIGERATION PASS-THRU, STAINLESS EXTERIOR

Model	# of Doors	# of Shelves	HP	Amps	Crated Weight lb. (kg.)	Cabinet Dimensions W D† H* (in)	Cabinet Dimensions W D† H* (mm)
SOLID SWING DOORS & LEFT SIDE REFRIGERATION SYSTEM							
TDR36-PTSZ1-L-S-S-1	2	0	½	1.8	270 (122)	36 x 24 ⁷ / ₈ x 34 ³ / ₄	914 x 631 x 881
TDR60-PTSZ1-L-S-SS-SS-1	4	0	¼	3.2	365 (166)	60 x 24 ⁷ / ₈ x 34 ³ / ₄	1524 x 631 x 881
TDR84-PTSZ1-L-S-SSS-SSS-1	6	0	¼	3.2	490 (222)	84 x 24 ⁷ / ₈ x 34 ³ / ₄	2134 x 631 x 881

† Depth does not include 1½" (39mm) for swing door handles.

* Height does not include 15¾" (400mm) for draft tower.

Environmentally friendly R290 hydrocarbon refrigeration system for the best in food preservation.



All dimensions are rounded up to the nearest 1/8" (whole millimeter) | Specifications subject to change without notice.

DIRECT DRAW BEER DISPENSERS, BLACK & STAINLESS EXTERIORS

Solid Swing Doors



TDD-1-HC



TDD-3-HC



TDD-3CT-HC



TDD-4-S-HC

Features/Benefits

- Provides ice cold products 33°F to 38°F (0.5°C to 3.3°C) (normal ambient conditions).
- Exterior - Black, powder coated cold-rolled steel with stainless steel countertop.
- Interior - Stainless steel floor with ½" (13mm) lip & heavy galvanized steel walls.
- Insulated and chilled draft columns.
- LED interior lighting.
- NSF/ANSI Standard 7 compliant for open food product.
- Air vents on side to maximize flow of fresh air through condenser.
- Positive seal doors.
- Self-contained system.
- Each cabinet designed to accommodate a variety of beer kegs. See keg brochure on website for details.

- Available with optional legs or 2½" (64mm) or 4" (102mm) diameter castors (TDD-1-HC/1-S-HC: 4" (102mm) diameter castors standard equipment; 2½" (64mm) diameter castors & legs not available).

Club-Top models have...

- One, 3/8" (10mm) easy to reach, heavy-duty, black PVC-coated wire refrigerated storage shelf for chilled beer or wine glasses.
- Anodized aluminum glass rail provides convenient storage area for glasses on top.
- Convenient easy-glide lid.
- Flip-lock to secure stainless steel lid.

Stainless Steel models have...

- Stainless steel exterior and countertop for those who appreciate the value of stainless.



TDD DIRECT DRAW BEER DISPENSERS, STAINLESS TOP, BLACK EXTERIOR

Model	# of Doors	HP	Amps	Crated Weight lb. (kg.)	Cabinet Dimensions W D† H* (in)	Cabinet Dimensions W D† H* (mm)
SOLID SWING DOORS						
TDD-1-HC	1	1/10	1.4	205 (93)	23½ x 31¼ x 39¾	597 x 794 x 1010
TDD-2-HC	2	¼	2.8	330 (150)	58⅞ x 27⅞ x 37	1496 x 689 x 940
TDD-3-HC	2	¼	2.8	365 (166)	69⅞ x 27⅞ x 37	1756 x 689 x 940
TDD-4-HC	3	¼	2.8	445 (225)	90⅝ x 27⅞ x 37	2296 x 689 x 940

† Depth does not include 1" (26mm) for rear bumpers (excludes TDD-1-HC).

* Height does not include 15¼" (388mm) for draft arm.

TDD DIRECT DRAW BEER DISPENSERS, STAINLESS EXTERIOR

Model	# of Doors	HP	Amps	Crated Weight lb. (kg.)	Cabinet Dimensions W D† H* (in)	Cabinet Dimensions W D† H* (mm)
SOLID SWING DOORS						
TDD-1-S-HC	1	1/10	1.4	215 (98)	23½ x 31¼ x 39¾	597 x 794 x 1010
TDD-2-S-HC	2	¼	2.8	330 (150)	58⅞ x 27⅞ x 37	1496 x 689 x 940
TDD-3-S-HC	2	¼	2.8	360 (164)	69⅞ x 27⅞ x 37	1756 x 689 x 940
TDD-4-S-HC	3	¼	2.8	405 (184)	90⅝ x 27⅞ x 37	2296 x 689 x 940

† Depth does not include 1" (26mm) for rear bumpers (excludes TDD-1-S-HC).

* Height does not include 15¼" (388mm) for draft arm.

TDD CLUB-TOP DIRECT DRAW BEER DISPENSERS, STAINLESS TOP, BLACK EXTERIOR

Model	# of Doors	HP	Amps	Crated Weight lb. (kg.)	Cabinet Dimensions W D† H* (in)	Cabinet Dimensions W D† H* (mm)
SOLID SWING DOORS						
TDD-2CT-HC	2	¼	2.8	350 (159)	58⅞ x 27⅞ x 38½	1496 x 689 x 940
TDD-3CT-HC	2	¼	2.8	385 (175)	69⅞ x 27⅞ x 38½	1756 x 689 x 940
TDD-4CT-HC	3	¼	2.8	465 (211)	90⅝ x 27⅞ x 38½	2296 x 689 x 940

† Depth does not include 1" (26mm) for rear bumpers.

* Height does not include 13¾" (350mm) for draft arm.

TDD CLUB-TOP DIRECT DRAW BEER DISPENSERS, STAINLESS TOP, STAINLESS EXTERIOR

Model	# of Doors	HP	Amps	Crated Weight lb. (kg.)	Cabinet Dimensions W D† H* (in)	Cabinet Dimensions W D† H* (mm)
SOLID SWING DOORS						
TDD-2CT-S-HC	2	¼	2.8	350 (159)	58⅞ x 27⅞ x 38½	1496 x 689 x 940
TDD-3CT-S-HC	2	¼	2.8	385 (175)	69⅞ x 27⅞ x 38½	1756 x 689 x 940
TDD-4CT-S-HC	3	¼	2.8	485 (220)	90⅝ x 27⅞ x 38½	2296 x 689 x 940

† Depth does not include 1" (26mm) for rear bumpers.

* Height does not include 13¾" (350mm) for draft arm.

TDD NITRO KIT MODELS

Sold Separately. See "accessories" section for additional individual nomenclature.

Environmentally friendly R290 hydrocarbon refrigeration system for the best in food preservation.



Bar Refrigeration | TD & T-GC

HORIZONTAL BOTTLE COOLERS - DEEP WELL & GLASS & PLATE CHILLERS/FROSTERS

Solid Slide Lids

Heavy-duty 3/8" (10mm) thick pure grade PVC-coated adjustable bin dividers for maximum storage use



Huge capacity requires minimum floor space

Heavy-duty PVC-coated wire shelves for maximum flexibility



Largest storage capacity in the industry - meets supply and demand requirements during peak hours

TD-36-12-HC

T-36-GC-S-HC



TD-24-7-HC



TD-50-18-S-HC



TD-80-30-HC



T-36-GC-HC



T-50-GC-S-HC

Features/Benefits

Horizontal Bottle Coolers - Deep Well

- Provides ice cold products 33°F to 38°F (0.5°C to 3.3°C) – very fast pull-down capacity.
- Positive guided, forced air cooling - cools bottles on top first.
- Exterior - Black, powder coated cold-rolled steel with stainless steel countertop and lids.
- Interior - long lasting heavy-duty galvanized steel. Complies with NSF/ANSI Standard 7 for packaged and bottled product.
- LED interior lighting.
- Huge capacity requires minimum floor space.
- Rugged, removable, bottle cap opener and cap catcher included. Field installed.
- Self-contained system.
- Available with optional 6" (153mm) legs or 3" (77mm) or 2½" (64mm) diameter castors.

Glass & Plate Chillers/Frosters

- Save time - load glasses dry and frost even faster with temperature 0°F (-17.8°C) and below.
 - Exterior - Black, powder coated cold-rolled steel with stainless steel countertop and lids.
 - Interior - long lasting heavy-duty galvanized steel.
 - Listed under NSF/ANSI standard 7 for the storage and/or display of packaged or bottled product..
 - Automatic defrost system time-initiated, time-terminated.
 - Self-contained system.
 - Available with optional legs or 3" (77mm) or 2½" (64mm) diameter castors.
 - Available with optional ratchet locks for added security.
- Stainless Steel models have...**
- Stainless steel exterior and countertop for those who appreciate the value of stainless.



TD HORIZONTAL BOTTLE COOLERS - DEEP WELL

Model	# of Lids	# of Dividers	HP	Amps	Crated Weight lb. (kg.)	Cabinet Dimensions W D† H* (in)	Cabinet Dimensions W D† H* (mm)
BLACK EXTERIOR							
TD-24-7-HC	1	2	1/10	1.4	180 (82)	24½ x 26¾ x 33½	623 x 683 x 850
TD-36-12-HC	1	2	1/10	1.4	230 (105)	36¾ x 26¾ x 33½	931 x 683 x 850
TD-50-18-HC	2	3	1/5	1.9	280 (128)	49½ x 26¾ x 33½	1255 x 683 x 850
TD-65-24-HC	2	4	1/5	1.9	370 (168)	64½ x 26¾ x 33½	1636 x 683 x 850
TD-80-30-HC	3	6	1/4	2.8	415 (188)	80¾ x 26¾ x 33½	2035 x 683 x 850
TD-95-38-HC	3	7	1/4	3.1	480 (218)	95¾ x 26¾ x 33½	2416 x 683 x 850
STAINLESS EXTERIOR							
TD-24-7-S-HC	1	2	1/10	1.4	180 (82)	24½ x 26¾ x 33½	623 x 683 x 850
TD-36-12-S-HC	1	2	1/10	1.4	225 (103)	36¾ x 26¾ x 33¾	934 x 677 x 848
TD-50-18-S-HC	2	3	1/5	1.9	280 (128)	49¾ x 26¾ x 33¾	1261 x 677 x 848
TD-65-24-S-HC	2	4	1/5	1.9	370 (168)	64¾ x 26¾ x 33¾	1642 x 677 x 848
TD-80-30-S-HC	3	6	1/4	2.8	415 (189)	80¾ x 26¾ x 33½	2035 x 683 x 850
TD-95-38-S-HC	3	7	1/4	3.1	470 (214)	95¾ x 26¾ x 33¾	2423 x 677 x 848

† Depth does not include 1½" (39mm) for cap catcher or 1" (26mm) for rear bumpers.
 note: 12 oz. bottles refers to 12 oz. longneck bottles.

T-GC GLASS & PLATE CHILLERS/FROSTERS

Model	# of Lids	# of Dividers	HP	Amps	Crated Weight lb. (kg.)	Cabinet Dimensions W D† H* (in)	Cabinet Dimensions W D† H* (mm)
BLACK EXTERIOR							
T-24-GC-HC	1	3	1/5	2.3	180 (82)	24½ x 26¾ x 33½	623 x 683 x 850
T-36-GC-HC	1	3	1/4	2.3	240 (109)	36¾ x 26¾ x 33¾	934 x 677 x 848
T-50-GC-HC	2	5	1/3	3.5	290 (132)	49¾ x 26¾ x 33¾	1261 x 677 x 848
STAINLESS EXTERIOR							
T-24-GC-S-HC	1	3	1/5	2.3	185 (84)	24½ x 26¾ x 33½	623 x 683 x 850
T-36-GC-S-HC	1	3	1/4	2.3	245 (112)	36¾ x 26¾ x 33¾	934 x 677 x 848
T-50-GC-S-HC	2	5	1/3	3.5	290 (132)	49¾ x 26¾ x 33¾	1261 x 677 x 848

† Depth does not include 1" (26mm) for rear bumpers.

T-GC GLASS LID OPTIONS

Model
GLASS LIDS "GLID"
TD-24-7-HC
TD-36-12-HC
TD-50-18-HC
TD-65-24-HC
TD-80-30-HC
TD-95-38-HC

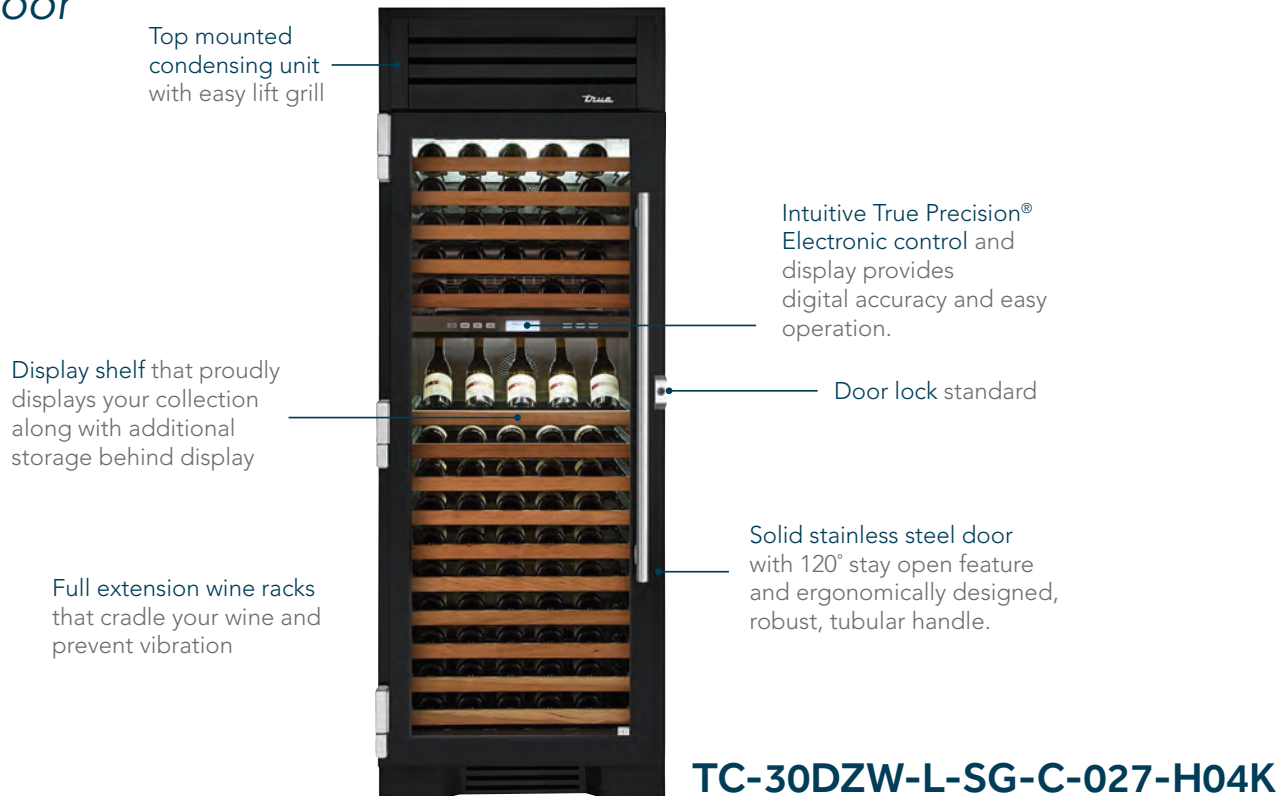
Environmentally friendly R290 hydrocarbon refrigeration system for the best in food preservation.



All dimensions are rounded up to the nearest 1/8" (whole millimeter) | Specifications subject to change without notice.

DUAL ZONE WINE COLUMN

Glass Door



TC-30DZW-L-SG-C-027-H04K



TC-30DZW-R-SG-C-027-H04K



TC-30DZW-R-SG-C-H04K

Features/Benefits

- 2 independent zones with dual evaporators that can be adjusted from 40°F (4.4°C) to 65°F (18.3°C).
- Front intake and Front discharge with the ability to be built in and/or banked with another unit.
- Industry exclusive, 300-series stainless steel interior and exterior.
- Black door, top grill, and toe kick; Galvanized sides and back with a stainless steel interior.
- Frame rail fitted with 2 leg levelers in the front and 4 recessed castors.
- Insulation - entire cabinet structure is foamed-in-place using a high density, polyurethane insulation that has zero ozone depletion potential (ODP) and zero global warming potential (GWP).
- Environmentally friendly R600a hydrocarbon refrigerant that improves performance and efficiency while ensuring quiet operation.
- "Low-E", double pane, UV tinted glass assembly.
- Beautifully crafted solid stainless steel door with 120° stay-open feature and ergonomically designed, robust, tubular handle.
- Patented TruLumina LED lighting gently illuminates your product and allows you to choose from 14 different color options with the push of a button.
- Fifteen (15) full extension, soft close wine racks - including display shelf. (150 bottle capacity). Not adjustable but removable.
- Unfinished cherry wood shelf fronts.
- Galvanized sides and back with a stainless steel interior.
- NSF/ANSI Standard 7 for the storage and/or display of packaged or bottled product.



TC 30" DUAL ZONE WINE COLUMN

Model	# of Doors	HP	Amps	Crated Weight lb. (kg.)	Cabinet Dimensions W D† H* (in)	Cabinet Dimensions W D† H* (mm)
GLASS SWING DOOR						
TC-30DZW-L-SG-C-027-H04K	1	N/A	0.9	555 (252)	30 x 28 x 84	762 x 712 x 2134
TC-30DZW-L-SG-C-H04K	1	N/A	0.9	555 (252)	30 x 28 x 84	762 x 712 x 2134
TC-30DZW-R-SG-C-027-H04K	1	N/A	0.9	555 (252)	30 x 28 x 84	762 x 712 x 2134
TC-30DZW-R-SG-C-H04K	1	N/A	0.9	555 (252)	30 x 28 x 84	762 x 712 x 2134

† Depth does not include 1½" (39mm).

* Height does not include ¼" (7mm) for leg levelers.

Bar Refrigeration | Capacities

BAR REFRIGERATION CAN/BOTTLE/BARREL CAPACITY

Model	Capacity (12oz. Cans)	Capacity (12oz. Bottles)	Capacity (Barrels)
TBR - REACH-IN, BLACK EXTERIOR			
TBR32-RISZ1-L-B-S-1	38 - 6pk.12oz.	21 - 6pk.12oz.	2 - 1/6
TBR36-RISZ1-L-B-S-1	44 - 6pk.12oz.	27 - 6pk.12oz.	4 - 1/6
TBR48-RISZ1-L-B-SS-1	76 - 6pk.12oz.	43 - 6pk.12oz.	6 - 1/6
TBR52-RISZ1-L-B-SS-1	78 - 6pk.12oz.	49 - 6pk.12oz.	2 - 1/2
TBR60-RISZ1-L-B-SS-1	101 - 6pk.12oz.	63 - 6pk.12oz.	2 - 1/2
TBR72-RISZ1-L-B-SSS-1	125 - 6pk.12oz.	78 - 6pk.12oz.	3 - 1/2
TBR84-RISZ1-L-B-SSS-1	164 - 6pk.12oz.	96 - 6pk.12oz.	3 - 1/2
TBR92-RISZ1-L-B-SSSS-1	182 - 6pk.12oz.	108 - 6pk.12oz.	4 - 1/2
TBR108-RISZ1-L-B-SSSS-1	220 - 6pk.12oz.	132 - 6pk.12oz.	4 - 1/2
TBR32-RISZ1-L-B-G-1	38 - 6pk.12oz.	21 - 6pk.12oz.	2 - 1/6
TBR36-RISZ1-L-B-G-1	44 - 6pk.12oz.	27 - 6pk.12oz.	4 - 1/6
TBR48-RISZ1-L-B-GG-1	76 - 6pk.12oz.	43 - 6pk.12oz.	6 - 1/6
TBR52-RISZ1-L-B-GG-1	78 - 6pk.12oz.	49 - 6pk.12oz.	2 - 1/2
TBR60-RISZ1-L-B-GG-1	101 - 6pk.12oz.	63 - 6pk.12oz.	2 - 1/2
TBR72-RISZ1-L-B-GGG-1	125 - 6pk.12oz.	78 - 6pk.12oz.	3 - 1/2
TBR84-RISZ1-L-B-GGG-1	164 - 6pk.12oz.	96 - 6pk.12oz.	3 - 1/2
TBR92-RISZ1-L-B-GGGG-1	182 - 6pk.12oz.	108 - 6pk.12oz.	4 - 1/2
TBR108-RISZ1-L-B-GGGG-1	220 - 6pk.12oz.	132 - 6pk.12oz.	4 - 1/2
TBR48-RISZ1-L-B-11-1	68 - 6pk.12oz.	43 - 6pk.12oz.	5 - 1/6
TBR52-RISZ1-L-B-11-1	78 - 6pk.12oz.	48 - 6pk.12oz.	2 - 1/2
TBR60-RISZ1-L-B-11-1	100 - 6pk.12oz.	59 - 6pk.12oz.	2 - 1/2
TBR72-RISZ1-L-B-111-1	120 - 6pk.12oz.	73 - 6pk.12oz.	3 - 1/2
TBR - PASS-THRU, BLACK EXTERIOR			
TBR36-PTSZ1-L-B-S-S-1	38 - 6pk.12oz.	25 - 6pk.12oz.	6 - 1/6
TBR60-PTSZ1-L-B-SS-SS-1	89 - 6pk.12oz.	57 - 6pk.12oz.	2 - 1/2
TBR84-PTSZ1-L-B-SSS-SSS-1	164 - 6pk.12oz.	88 - 6pk.12oz.	3 - 1/2
TBR36-PTSZ1-L-B-G-G-1	38 - 6pk.12oz.	25 - 6pk.12oz.	6 - 1/6
TBR60-PTSZ1-L-B-GG-GG-1	89 - 6pk.12oz.	57 - 6pk.12oz.	2 - 1/2
TBR84-PTSZ1-L-B-GGG-GGG-1	164 - 6pk.12oz.	88 - 6pk.12oz.	3 - 1/2
TBR60-PTSZ1-L-B-11-11-1	88 - 6pk.12oz.	54 - 6pk.12oz.	2 - 1/2
TBR - REACH-IN, STAINLESS EXTERIOR			
TBR32-RISZ1-L-S-S-1	38 - 6pk.12oz.	21 - 6pk.12oz.	2 - 1/6
TBR36-RISZ1-L-S-S-1	44 - 6pk.12oz.	27 - 6pk.12oz.	4 - 1/6
TBR48-RISZ1-L-S-SS-1	76 - 6pk.12oz.	43 - 6pk.12oz.	6 - 1/6
TBR52-RISZ1-L-S-SS-1	78 - 6pk.12oz.	49 - 6pk.12oz.	2 - 1/2
TBR60-RISZ1-L-S-SS-1	101 - 6pk.12oz.	63 - 6pk.12oz.	2 - 1/2
TBR72-RISZ1-L-S-SSS-1	125 - 6pk.12oz.	78 - 6pk.12oz.	3 - 1/2
TBR84-RISZ1-L-S-SSS-1	164 - 6pk.12oz.	96 - 6pk.12oz.	3 - 1/2
TBR92-RISZ1-L-S-SSSS-1	182 - 6pk.12oz.	108 - 6pk.12oz.	4 - 1/2
TBR108-RISZ1-L-S-SSSS-1	220 - 6pk.12oz.	132 - 6pk.12oz.	4 - 1/2
TBR32-RISZ1-L-S-G-1	38 - 6pk.12oz.	21 - 6pk.12oz.	2 - 1/6
TBR36-RISZ1-L-S-G-1	44 - 6pk.12oz.	27 - 6pk.12oz.	4 - 1/6
TBR48-RISZ1-L-S-GG-1	76 - 6pk.12oz.	43 - 6pk.12oz.	6 - 1/6
TBR52-RISZ1-L-S-GG-1	78 - 6pk.12oz.	49 - 6pk.12oz.	2 - 1/2
TBR60-RISZ1-L-S-GG-1	101 - 6pk.12oz.	63 - 6pk.12oz.	2 - 1/2
TBR72-RISZ1-L-S-GGG-1	125 - 6pk.12oz.	78 - 6pk.12oz.	3 - 1/2
TBR84-RISZ1-L-S-GGG-1	164 - 6pk.12oz.	96 - 6pk.12oz.	3 - 1/2
TBR92-RISZ1-L-S-GGGG-1	182 - 6pk.12oz.	108 - 6pk.12oz.	4 - 1/2
TBR108-RISZ1-L-S-GGGG-1	220 - 6pk.12oz.	132 - 6pk.12oz.	4 - 1/2

note: 12 oz. bottles refers to 12 oz. longneck bottles.

Model	Capacity (12oz. Cans)	Capacity (12oz. Bottles)	Capacity (Barrels)
TBR - REACH-IN, STAINLESS EXTERIOR (CONT.)			
TBR48-RISZ1-L-S-11-1	68 - 6pk.12oz.	43 - 6pk.12oz.	5 - 1/6
TBR52-RISZ1-L-S-11-1	78 - 6pk.12oz.	48 - 6pk.12oz.	2 - 1/2
TBR60-RISZ1-L-S-11-1	100 - 6pk.12oz.	59 - 6pk.12oz.	2 - 1/2
TBR72-RISZ1-L-S-111-1	120 - 6pk.12oz.	73 - 6pk.12oz.	3 - 1/2
TBR - PASS THRU, STAINLESS EXTERIOR			
TBR36-PTSZ1-L-S-S-S-1	38 - 6pk.12oz.	25 - 6pk.12oz.	6 - 1/6
TBR60-PTSZ1-L-S-SS-SS-1	89 - 6pk.12oz.	57 - 6pk.12oz.	2 - 1/2
TBR84-PTSZ1-L-S-SSS-SSS-1	164 - 6pk.12oz.	88 - 6pk.12oz.	3 - 1/2
TBR36-PTSZ1-L-S-G-G-1	38 - 6pk.12oz.	25 - 6pk.12oz.	6 - 1/6
TBR60-PTSZ1-L-S-GG-GG-1	89 - 6pk.12oz.	57 - 6pk.12oz.	2 - 1/2
TBR84-PTSZ1-L-S-GGG-GGG-1	164 - 6pk.12oz.	88 - 6pk.12oz.	3 - 1/2
TBR60-PTSZ1-L-S-11-11-1	88 - 6pk.12oz.	54 - 6pk.12oz.	2 - 1/2
TDR - REACH-IN, BLACK EXTERIOR			
TDR32-RISZ1-L-B-S-1	38 - 6pk.12oz.	21 - 6pk.12oz.	2 - 1/6
TDR36-RISZ1-L-B-S-1	44 - 6pk.12oz.	27 - 6pk.12oz.	4 - 1/6
TDR48-RISZ1-L-B-SS-1	76 - 6pk.12oz.	43 - 6pk.12oz.	6 - 1/6
TDR52-RISZ1-L-B-SS-1	78 - 6pk.12oz.	49 - 6pk.12oz.	2 - 1/2
TDR60-RISZ1-L-B-SS-1	101 - 6pk.12oz.	63 - 6pk.12oz.	2 - 1/2
TDR72-RISZ1-L-B-SSS-1	125 - 6pk.12oz.	78 - 6pk.12oz.	2 - 1/2
TDR84-RISZ1-L-B-SSS-1	164 - 6pk.12oz.	96 - 6pk.12oz.	2 - 1/2
TDR92-RISZ1-L-B-SSSS-1	182 - 6pk.12oz.	108 - 6pk.12oz.	2 - 1/2
TDR108-RISZ1-L-B-SSSS-1	220 - 6pk.12oz.	132 - 6pk.12oz.	2 - 1/2
TDR48-RISZ1-L-B-SG-1	38 - 6pk.12oz.	21 - 6pk.12oz.	3 - 1/6
TDR52-RISZ1-L-B-SG-1	38 - 6pk.12oz.	24 - 6pk.12oz.	2 - 1/2
TDR - PASS-THRU, BLACK EXTERIOR			
TDR36-PTSZ1-L-B-S-S-1	38 - 6pk.12oz.	25 - 6pk.12oz.	6 - 1/6
TDR60-PTSZ1-L-B-SS-SS-1	89 - 6pk.12oz.	57 - 6pk.12oz.	2 - 1/2
TDR84-PTSZ1-L-B-SSS-SSS-1	164 - 6pk.12oz.	88 - 6pk.12oz.	6 - 1/2
TDR - REACH-IN, STAINLESS EXTERIOR			
TDR32-RISZ1-L-S-S-1	38 - 6pk.12oz.	21 - 6pk.12oz.	2 - 1/6
TDR36-RISZ1-L-S-S-1	44 - 6pk.12oz.	27 - 6pk.12oz.	4 - 1/6
TDR48-RISZ1-L-S-SS-1	76 - 6pk.12oz.	43 - 6pk.12oz.	6 - 1/6
TDR52-RISZ1-L-S-SS-1	78 - 6pk.12oz.	49 - 6pk.12oz.	2 - 1/2
TDR60-RISZ1-L-S-SS-1	101 - 6pk.12oz.	63 - 6pk.12oz.	2 - 1/2
TDR72-RISZ1-L-S-SSS-1	125 - 6pk.12oz.	78 - 6pk.12oz.	2 - 1/2
TDR84-RISZ1-L-S-SSS-1	164 - 6pk.12oz.	96 - 6pk.12oz.	2 - 1/2
TDR92-RISZ1-L-S-SSSS-1	182 - 6pk.12oz.	108 - 6pk.12oz.	2 - 1/2
TDR108-RISZ1-L-S-SSSS-1	220 - 6pk.12oz.	132 - 6pk.12oz.	2 - 1/2
TDR48-RISZ1-L-S-SG-1	38 - 6pk.12oz.	21 - 6pk.12oz.	3 - 1/6
TDR52-RISZ1-L-S-SG-1	38 - 6pk.12oz.	24 - 6pk.12oz.	2 - 1/2
TDR - PASS-THRU, STAINLESS EXTERIOR			
TDR36-PTSZ1-L-S-S-S-1	38 - 6pk.12oz.	25 - 6pk.12oz.	6 - 1/6
TDR60-PTSZ1-L-S-SS-SS-1	89 - 6pk.12oz.	57 - 6pk.12oz.	2 - 1/2
TDR84-PTSZ1-L-S-SSS-SSS-1	164 - 6pk.12oz.	88 - 6pk.12oz.	6 - 1/2
TBB - REACH-IN, STAINLESS TOP, BLACK EXTERIOR			
TBB-1-HC	30 6-pks12oz.	-	1 - 1/2
TBB-2-HC	88 6-pks12oz.	-	2 - 1/2
TBB-3-HC	112 6-pks12oz.	-	3 - 1/2
TBB-4-HC	152 6-pks12oz.	-	4 - 1/2

note: 12 oz. bottles refers to 12 oz. longneck bottles.

Model	Capacity (12oz. Cans)	Capacity (12oz. Bottles)	Capacity (Barrels)
TBB - REACH-IN, STAINLESS TOP, BLACK EXTERIOR			
TBB-2G-HC-LD	88 6-pks.12oz.	-	2 - 1/2
TBB-3G-HC-LD	112 6-pks.12oz.	-	3 - 1/2
TBB-4G-HC-LD	152 6-pks.12oz.	-	4 - 1/2
TBB - PASS-THRU, STAINLESS TOP, BLACK EXTERIOR			
TBB-4PT	152 6-pks.12oz.	-	4 - 1/2
TBB - REACH-IN, STAINLESS TOP, STAINLESS EXTERIOR			
TBB-1-S-HC	30 6-pks.12oz.	-	1 - 1/2
TBB-2-S-HC	88 6-pks.12oz.	-	2 - 1/2
TBB-3-S-HC	112 6-pks.12oz.	-	3 - 1/2
TBB-4-S-HC	152 6-pks.12oz.	-	4 - 1/2
TBB-2G-S-HC-LD	88 6-pks.12oz.	-	2 - 1/2
TBB-3G-S-HC-LD	112 6-pks.12oz.	-	3 - 1/2
TBB-4G-S-HC-LD	152 6-pks.12oz.	-	4 - 1/2
TBB - PASS-THRU, STAINLESS TOP, STAINLESS EXTERIOR			
TBB-4PT-S	152 6-pks.12oz.	-	4 - 1/2
TBB24 - 24" (610MM) REACH-IN, STAINLESS TOP, STAINLESS EXTERIOR			
TBB24-48-2S-Z1-SFT-B-1	76 6-pks.12oz.	43 6-pks.12oz.	6 - 1/6
TBB24-60-2S-Z1-SFT-B-1	89 6-pks.12oz.	57 6-pks.12oz.	2 - 1/2
TBB24-72-3S-Z1-SFT-B-1	125 6-pks.12oz.	78 6-pks.12oz.	3 - 1/2
TBB24-48-2G-Z1-SFT-B-1	76 6-pks.12oz.	43 6-pks.12oz.	6 - 1/6
TBB24-60-2G-Z1-SFT-B-1	89 6-pks.12oz.	57 6-pks.12oz.	2 - 1/2
TBB24-72-3G-Z1-SFT-B-1	125 6-pks.12oz.	78 6-pks.12oz.	3 - 1/2
TBB24 - 24" (610MM) REACH-IN, STAINLESS TOP, STAINLESS EXTERIOR			
TBB24-48-2S-Z1-SFT-S-1	76 6-pks.12oz.	43 6-pks.12oz.	6 - 1/6
TBB24-60-2S-Z1-SFT-S-1	89 6-pks.12oz.	57 6-pks.12oz.	2 - 1/2
TBB24-72-3S-Z1-SFT-S-1	125 6-pks.12oz.	78 6-pks.12oz.	3 - 1/2
TBB24-48-2G-Z1-SFT-S-1	76 6-pks.12oz.	43 6-pks.12oz.	6 - 1/6
TBB24-60-2G-Z1-SFT-S-1	89 6-pks.12oz.	57 6-pks.12oz.	2 - 1/2
TBB24-72-3G-Z1-SFT-S-1	125 6-pks.12oz.	78 6-pks.12oz.	3 - 1/2
TBB24 - 24" (610MM) REACH-IN, BLACK SUB-TOP, BLACK EXTERIOR			
TBB24-48-2S-Z1-BST-B-1	76 6-pks.12oz.	43 6-pks.12oz.	6 - 1/6
TBB24-60-2S-Z1-BST-B-1	89 6-pks.12oz.	57 6-pks.12oz.	2 - 1/2
TBB24-72-3S-Z1-BST-B-1	125 6-pks.12oz.	78 6-pks.12oz.	3 - 1/2
TBB24-48-2G-Z1-BST-B-1	76 6-pks.12oz.	43 6-pks.12oz.	6 - 1/6
TBB24-60-2G-Z1-BST-B-1	89 6-pks.12oz.	57 6-pks.12oz.	2 - 1/2
TBB24-72-3G-Z1-BST-B-1	125 6-pks.12oz.	78 6-pks.12oz.	3 - 1/2
TBB24 - 24" (610MM) REACH-IN, BLACK SUB-TOP, STAINLESS EXTERIOR			
TBB24-48-2S-Z1-BST-S-1	76 6-pks.12oz.	43 6-pks.12oz.	6 - 1/6
TBB24-60-2S-Z1-BST-S-1	89 6-pks.12oz.	57 6-pks.12oz.	2 - 1/2
TBB24-72-3S-Z1-BST-S-1	125 6-pks.12oz.	78 6-pks.12oz.	3 - 1/2
TBB24-48-2G-Z1-BST-S-1	76 6-pks.12oz.	43 6-pks.12oz.	6 - 1/6
TBB24-60-2G-Z1-BST-S-1	89 6-pks.12oz.	57 6-pks.12oz.	2 - 1/2
TBB24-72-3G-Z1-BST-S-1	125 6-pks.12oz.	78 6-pks.12oz.	3 - 1/2
TDD - STAINLESS TOP, BLACK EXTERIOR			
TDD-1-HC	-	-	1 - 1/2
TDD-2-HC	-	-	2 - 1/2
TDD-3-HC	-	-	3 - 1/2
TDD-4-HC	-	-	4 - 1/2

note: 12 oz. bottles refers to 12 oz. longneck bottles.

Model	Capacity (12oz. Cans)	Capacity (12oz. Bottles)	Capacity (Barrels)
TDD - STAINLESS EXTERIOR			
TDD-1-S-HC	-	-	1 - 1/2
TDD-2-S-HC	-	-	2 - 1/2
TDD-3-S-HC	-	-	3 - 1/2
TDD-4-S-HC	-	-	4 - 1/2
TDD - CLUB-TOP, STAINLESS TOP, BLACK EXTERIOR			
TDD-2CT-HC	-	-	2 - 1/2
TDD-3CT-HC	-	-	3 - 1/2
TDD-4CT-HC	-	-	4 - 1/2
TDD - CLUB-TOP, STAINLESS TOP, STAINLESS EXTERIOR			
TDD-2CT-S-HC	-	-	2 - 1/2
TDD-3CT-S-HC	-	-	3 - 1/2
TDD-4CT-S-HC	-	-	4 - 1/2
TD - HORIZONTAL BOTTLE COOLER - DEEP WELL			
TD-24-7-HC	6 Cases	4.5 Cases	-
TD-36-12-HC	14.5 Cases	11 Cases	-
TD-50-18-HC	24 Cases	16.5 Cases	-
TD-65-24-HC	32.5 Cases	22 Cases	-
TD-80-30-HC	42 Cases	30 Cases	-
TD-95-38-HC	55 Cases	37.5 Cases	-
TD-24-7-S-HC	6 Cases	4.5 Cases	-
TD-36-12-S-HC	14.5 Cases	11 Cases	-
TD-50-18-S-HC	24 Cases	16.5 Cases	-
TD-65-24-S-HC	32.5 Cases	22 Cases	-
TD-80-30-S-HC	42 Cases	30 Cases	-
TD-95-38-S-HC	55 Cases	37.5 Cases	-
T-GC - GLASS & PLATE CHILLERS/FROSTERS			
T-24-GC-HC	85	90	-
T-36-GC-HC	172	180	-
T-50-GC-HC	240	250	-
T-24-GC-S-HC	85	90	-
T-36-GC-S-HC	172	180	-
T-50-GC-S-HC	240	250	-

note: 12 oz. bottles refers to 12 oz. longneck bottles.



Bar Refrigeration | Panel Ready Doors

TBR/TDR PANEL READY DOORS

Match your style and decor!

True's line of refrigerated bar equipment now offers the option of Panel Ready Doors* which allow you to **enhance any bar with a custom look to match your cabinetry.**



TBR52-ROSZ1-R-B-SG-1

Please scan the QR code to access the TBR | TDR Bar Refrigeration Installation Manual and refer to the "Overlay Panel Specifications" (Pages 15-20).



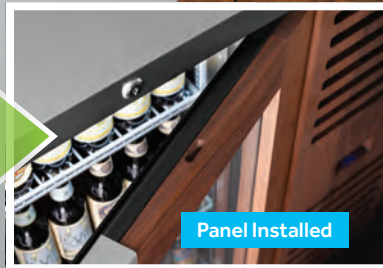
Please Note

- True **does not** manufacture custom overlay panels.
- True cabinets with panel ready doors will ship **without** finished panels in place. (See black cabinet shown above).
- **Detailed drawings and measurements** are provided in the install manuals for aftermarket production of overlay panels.

Your cabinet will come without finished front panels but **ready for custom after-market panel installation** to further customize the look and style of your equipment.

Available on all TBR and TDR models.

*Custom overlay panels not sold by True. Cabinet ships ready for custom panel installation.



BAR REFRIGERATION



True's line of bar refrigerators offers multiple options to choose from. Whether it's temperature range, door type, or lighting color, True Bar refrigerators can be customized to fit the functionality and style of any bar.

TBR/TDR NOMENCLATURE

Model Family

TBR | True Bar Refrigerator
TDR | True Draft Refrigerator

Type

RI | Reach-In
PT | Pass Thru
RO | Reach-In Panel Ready
PO | Pass Thru Panel Ready

Refrigeration System Side

L | Left
R | Right

Front Side Cabinet Type

S | Solid
G | Glass
1 | Sliding Glass

TBR72-RISZ1-L-B-GGG-1

Length

32" | 36" | One Section
48" | 52" | 60" | Two Section
72" | 84" | Three Section
92" | 108" | Four Section

Temperature

SZ1 | Single Zone (35°F)
SZ2 | Single Zone (55°F)
SZ3 | Single Zone (45°F)

Main Cabinet Finish

B | Black (Black Cabinet/
SS Countertop)
Z | Black (Black Cabinet/
Black Countertop*)
S | Stainless Steel
X | Custom

Voltage

1 | 115/60 Hz
2 | 220-40 / 50-60 Hz

***NOTE:** Black countertops not offered on the 108" models.