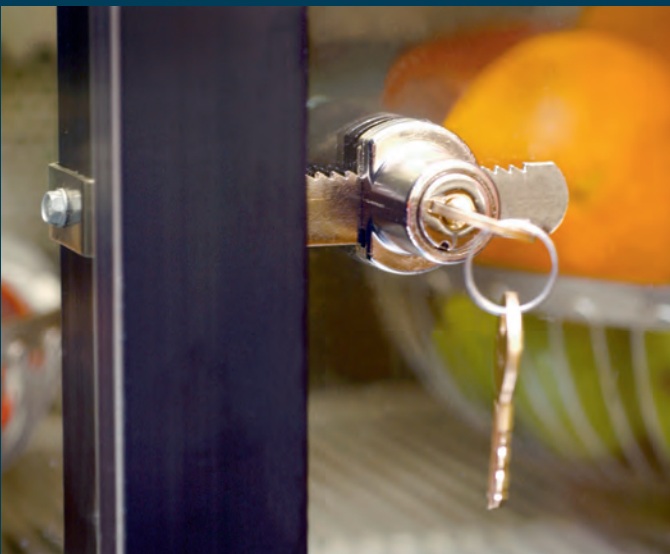


# ACCESSORIES

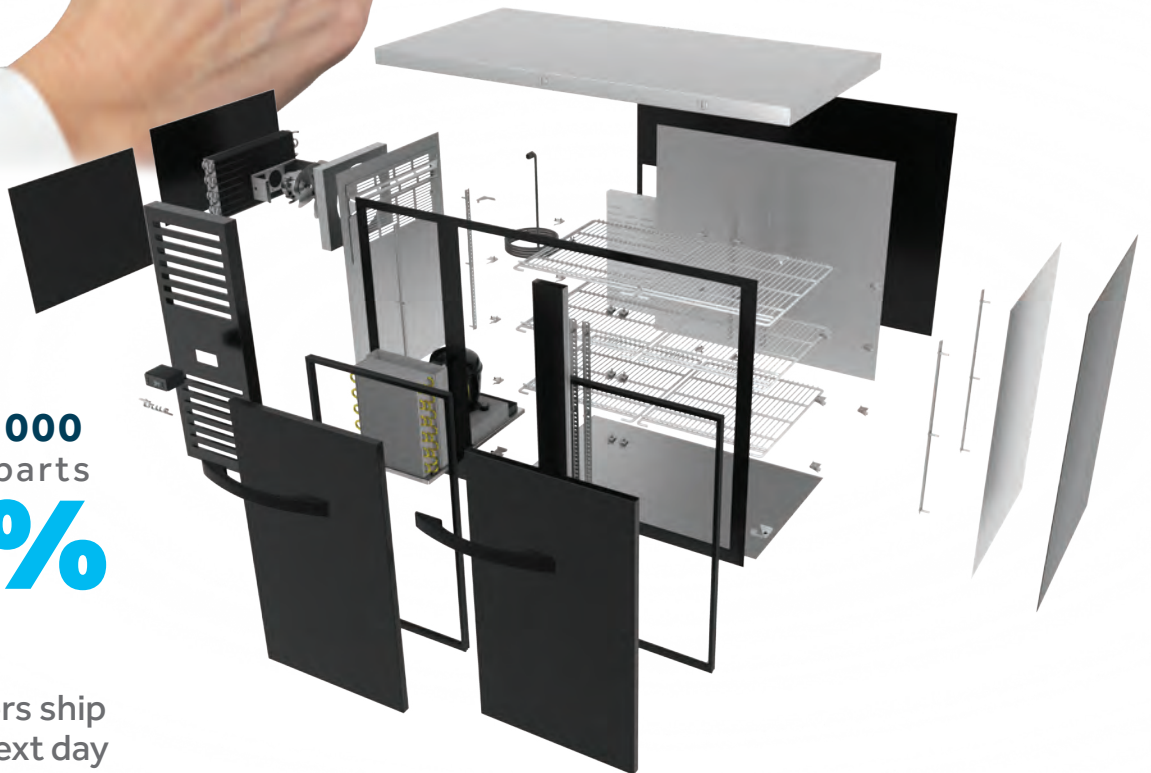


# OEM Parts

## Original Equipment Manufacturing Parts



Our experienced Global Customer Support Team combined with same day shipping gets you the parts you need when you need them.



With over **100,000** ready-to-ship parts

# 80%

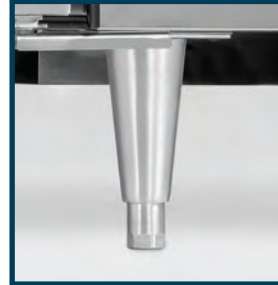
of True Parts orders ship out the same or next day

## SPEC SERIES OPTIONS

### Legs & Castors

#### Description

- 6" (153mm) Legs (set of 4) - (stainless steel)
- 6" (153mm) Legs (set of 6) - (stainless steel)
- 6" (153mm) Legs (set of 4) - for one & two section units
- 6" (153mm) Seismic/Flanged Legs (set of 4) - for one & two section units
- 5" (127mm) Castors (set of 4) - for one & two section units w/brake
- 5" (127mm) Castors (set of 6) - 3 with brake & 3 without brake
- 3/4" (83mm) Castors (set of 4) - for one & two section units w/brake
- 3/4" (83mm) Castors (set of 6) - 3 with brake & 3 without brake



6" (153mm) Leg



6" (153mm) Seismic Leg



5" (127mm) Castor



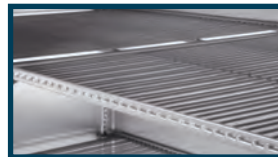
3/4" (83mm) Castor

### Shelving

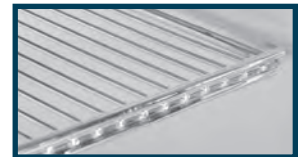
#### Description

- PVC coated shelf
- Chrome plated shelf
- Stainless steel shelf

note: When ordering STR/STA/STG Series shelves please indicate model type and section in unit that shelf will be in (left, center, or right).



PVC coated wire shelf



Chrome shelf

### Hasp Lock

#### Description

- Single section hasp lock
- Double section hasp lock

note: Hasp locks not available on two section units with all right or all left hinges.



Single section hasp lock



Double section hasp lock

# Accessories | Spec Series Options

## Interior Kit Options

### Description

Spec Kit #1 - (9) sets of #1 type tray slides and pilasters

Spec. Kit #2 - (1) set of #2 type tray slides and pilasters (equips 1/2 section only)

Spec. Kit #3 - (6) sets of universal type tray slides and pilasters

Spec. Kit #4 - (3) chrome shelves and shelf supports\*\*

(heated cabinets include wall mounted pilasters and shelf clips)

#1 Type Tray Slide for (1) 18" x 26" (458mm x 661mm) or

(2) 14" x 18" (356mm x 458mm) pans - per set of 2 (STR/STA/STG)

#2 Type Tray Slide for 18" x 26" (458mm x 661mm) pans per set of 2, equips 1/2 section (STR/STA/STG)

#3 Universal Type Tray Slide for (1) 18" x 26" (458mm x 661mm) or (2) 12" x 20" (305mm x 508mm) or (2) 14" x 18" (356mm x 458mm) pans - per set of 2 (STR/STA/STG)

#4 (1) Chrome shelf and shelf supports

note: when ordering interior kits for STR/STA/STG-Series units please indicate...

1. Model type

2. Interior kit type and quantity (#1 type, #2 type, #3 type, #4 type)

3. Section in unit that kit will be in (left, center, or right)

4. Location in section that kit will be used in (top half, bottom half, full section)\*

\* Pilasters are specific to interior kit type and are only available in half section and full section sizes.

\*\* On refrigerators and freezers, shelves mounted with pilaster/clip assembly available in lieu of standard shelf support system if ordered with cabinet from factory.

† Pilasters and tray slides/shelving for STR series are factory installed at no charge. (please note: lead time is required depending on cabinet availability). Tray slides for STA/STG to be field installed.

Tray Slide	Spacings				
<b>#1 Tray Slides</b>	2" 51mm	3" 77mm	4" 102mm	5" 127mm	6" 153mm
Behind full door length	28	19	14	11	10
Behind upper half door	13	9	7	5	5
Behind lower half door	13	9	7	5	5
<b>#2 Tray Slides 39mm O.C.</b>	2" 51mm	3" 77mm	4" 102mm	5" 127mm	6" 153mm
Behind full door length	38				
Behind upper half door	18	not available			
Behind lower half door	18	not available			
<b>Universal Tray Slides</b>	2" 51mm	3" 77mm	4" 102mm	5" 127mm	6" 153mm
Behind full door length			14	11	9
Behind upper half door	not available		6	5	4
Behind lower half door			6	5	4



**TYPE 1**

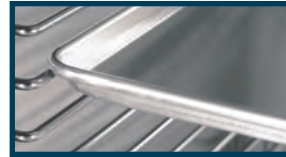
16 ga. Stainless Steel

For Bottom Support of:

(1) 18" x 26" (458mm x 661mm) pan or

(2) 14" x 18" (356mm x 458mm) pan

Angle type tray slide



**TYPE 2**

Chrome Plated Steel Rod Type

For Rim Support of:

(1) 18" x 26" (458mm x 661mm) pan

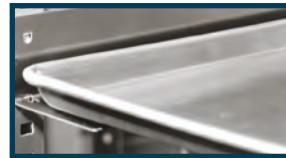
**note:** One pair of #2 tray slides

accommodates one half section.

for light duty applications only.

Not available for ST( )1DT-2HS-HC

Rod type tray slide



**TYPE 3**

16 ga. Stainless Steel

Angle Type for Bottom Support of:

(1) 18" x 26" (458mm x 661mm) pan or

(2) 14" x 18" (356mm x 458mm) pans or

(2) 12" x 20" (305mm x 508mm) pans

Universal tray slide



**TYPE 4**

**Chrome Shelves:**

Standard in STR & STA Series refrigerators & freezers.

Stainless steel shelves also available.

**PVC Coated Shelves:**

Standard in STG refrigerators & freezers.

Chrome and PVC coated shelves with supports

## Security Options - Reach-In & Pass Thru's

### SECURITY PACKAGE 1

Reach-In/Pass-Thru Refrigerators & Freezers

Reach-In/Pass-Thru Heated Cabinets

Includes all correctional options below  
 Tamper-proof Rainshield, Stainless Breaker Covers, Light Cover, Locking Hasp(s),  
 Non-Removable Doors, Control Cover, Top Screen/Guards, Security Screws (includes/Requires Top  
 Screen), Welded Tray Slides\*, & Seismic/Flanged Legs. Remove Hinge Covers & True Logo.

### SECURITY PACKAGE 2

Reach-In/Pass-Thru Refrigerators & Freezers

Reach-In/Pass-Thru Heated Cabinets

Includes the following, Tamper-proof Rainshield, Stainless Breaker Covers, Locking Hasp(s), Control  
 Cover, & Seismic/Flanged Legs. Remove Hinge Covers & True Logo.

### SECURITY PACKAGE 3

Reach-In/Pass-Thru Refrigerators & Freezers

Reach-In/Pass-Thru Heated Cabinets

Tamper-proof Rainshield, Locking Hasp(s) only (Padlock not included).

\*12 sets of welded universal tray slides per door opening. Sold separately. Contact Factory for details.  
 note: Individual security options or alternative combinations are available if needed. Contact Factory  
 for details.

note: The inclusion of all options on the models listed above adheres to the Chapter XIV section 1400  
 American Correctional Food Service Association Standard Number 1 Equipment Specifications Correctional  
 Package Correctional Food Service requirements.

note: Hasp locks not available on two section units with all-right or all left hinges.



Mesh screening



Hinged locking  
 thermostat control cover



Tamper proof rain  
 shield (standard)



Locking hasp



Seismic/flanged leg



Stainless steel thermal  
 breaker (interior)



Heavy duty, security  
 light cover (interior)



Tray slides & pilaster in  
 fixed/welded rack



Hinges without covers



Security screws

## Security Options - Roll-In & Roll Thru's

### SECURITY PACKAGE 1

Roll-In/Roll-Thru Refrigerators & Freezers

Roll-In/Roll-Thru Heated Cabinets

Includes all correctional options below  
 Tamper-proof Rainshield, Stainless Breaker Covers, Light Cover, Locking Hasp(s), Non-Removable  
 Doors, Control Cover, Top Screen/Guards, & Security Screws (includes/Requires Top Screen).  
 Remove Hinge Covers & True Logo.

### SECURITY PACKAGE 2

Roll-In/Roll-Thru Refrigerators & Freezers

Roll-In/Roll-Thru Heated Cabinets

Includes the following, Tamper-proof Rainshield, Stainless Breaker Covers, Locking Hasp(s), &  
 Control Cover. Remove Hinge Covers & True Logo.

### SECURITY PACKAGE 3

Roll-In/Roll-Thru Refrigerators & Freezers

Roll-In/Roll-Thru Heated Cabinets

Tamper-proof Rainshield, Locking Hasp(s) only (Padlock not included).

note: Individual security options or alternative combinations are available if needed. Contact Factory  
 for details.

note: The inclusion of all options on the models listed above adheres to the Chapter XIV section 1400  
 American Correctional Food Service Association Standard Number 1 Equipment Specifications Correctional  
 Package Correctional Food Service requirements.

note: Hasp locks not available on two section units with all-right or all left hinges.



STR2R-2S Security Package

## SHELVING

### PVC Coated Wire Shelves

#### Description

Standard Shelves

### Wire Cantilever Shelves

#### Description

FLM-27/FLM-27F White

FLM-27/FLM-27F Black

FLM-54/54F/FLM-81/81F White

FLM-54/54F/FLM-81/81F Black

TCGG-36/-S-LD (with light assembly)

TCGG-48/-S-LD (with light assembly)

TCGG-60/-S-LD (with light assembly)(left side)

TCGG-60/-S-LD (with light assembly)(right side)

TCGG-72/-S-LD (with light assembly)

### Solid Cantilever Shelves

#### Description

FLM-27/FLM-27F White

FLM-27/FLM-27F Black

FLM-27/FLM-27F Stainless Steel

FLM-54/54F/FLM-81/81F White

FLM-54/54F/FLM-81/81F Stainless Steel

TVM Shelves

TOAM-30GS-HC-White

TOAM-30GS-HC-Black

TOAM-30GS-HC-Stainless Steel

### Chrome Plated Shelves

#### Description

Chrome Shelves for TH-23 & TH-23G~FGD01

### Price Strips

#### Description

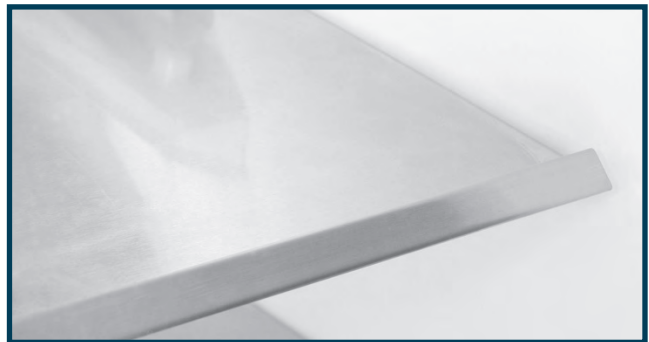
Price Strips



Wire Shelf



Chrome Shelf



Stainless Steel Cantilever Shelf



Price Strip mounted on wire shelf

Note: Lighted shelves for display cases are limited to the number of receptacles included with the cabinet. Order by model number.

## Shelf Organizers

Description	
20 oz. TrueFlex®**	<i>TrueFlex®</i>
20 oz. TrueTrac®**	<i>TrueTrac®</i>
1 liter TrueTrac®	<i>TrueTrac®</i>
TrueFlex® Pac (TVM-30-HC)	<i>TrueFlex®</i>
TrueFlex® Pac (TVM-36-HC)	<i>TrueFlex®</i>

\* Most cooler sizes will utilize the TrueFlex® Organizers  
 TrueFlex® Organizers not available for the following models (TrueTrac® required)  
 GDM-10PT-HC~TSL01, GDM-33CPT-54-LD, GDM-33SSL-56-HC-LD, GDM-35SL-RF-HC-LD,  
 GDM-41SL-54-HC-LD, GDM-41SL-60-HHC-LD, GDM-41SL-HC-LD.  
 TrueFlex® & TrueTrac® organizers are not available for 10SSL-HC~TSL01.  
 TrueFlex® organizers available for all back bar models.  
 TrueFlex® organizers require existing or optional shelf for installation.  
 \*\*For GDM-35SLRF-HC, GDM-33CPT-LD, & GDM-33CPT-54-LD models only.

## TrueFlex® Beer Organizers

Description	Quantity
27" (686MM) DEEP MODELS	
TBB-2-HC	26
TBB-3-HC	34
TBB-4-HC	46
24" (610MM) DEEP MODELS	
TBB24-48-HC	20
TBB24-60-HC	28
TBB24-72-HC	36

## Wine Shelves

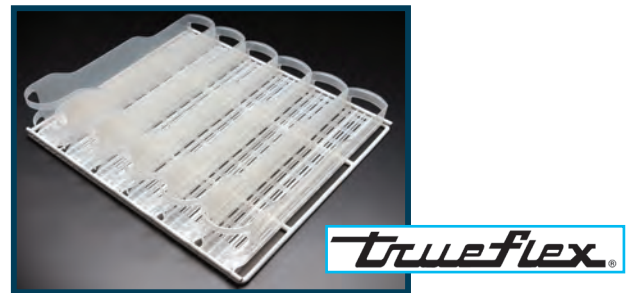
Description
GDM-23-HC~TSL01, GDM-45-HC-LD
GDM-47-HC-LD, TSD-47-HD
GDM-69-HC-LD, GDM-72-HC~TSL01, T-72-HC, TSD-69, TBB-2-HC, TBB-3-HC, TBB-4-HC
FLM-27/FLM-27F White
FLM-27/FLM-27F Black
FLM-27/FLM-27F Gray
FLM-54/54F/FLM-81-81F White
FLM-54/54F/FLM-81-81F Black
FLM-54/54F/FLM-81-81F Gray

## Sliding Wine Racks

Description
GDM-23-HC~TSL01
GDM-23W-HC~TSL01



TrueTrac® (standard with 3/4" (19mm) price strip)



TrueFlex® Organizer



TrueFlex® Beer Organizer



Wine rack



Sliding wine rack

## RACKS & BASKETS

### Bun Tray Racks

Description	Dimensions (W x D x H)
Full Door T, TH, TS*	20 $\frac{7}{8}$ x 24 x 51 (531 x 610 x 1296)
Half Door T, TH, TS, TPP-AT-44, 60, -67, -93, -119 TUC/TWT-44-HC, 60-32-HC, -67-HC**	20 $\frac{7}{8}$ x 24 x 22 $\frac{1}{2}$ (531 x 610 x 572)
T-35-HC, 35G-HC~FGD01, T-43-HC Full Door	16 x 24 x 51 (407 x 610 x 1296)
T-35-HC, 35G-HC~FGD01, T-43-HC Half Door	16 x 24 x 22 $\frac{1}{2}$ (407 x 610 x 572)
Bun Tray Runner, Standard	19 $\frac{3}{4}$ x 1 $\frac{1}{2}$ x 1 $\frac{1}{16}$ (502 x 39 x 27)
Bun Tray Runner, Universal***	19 $\frac{3}{4}$ x 5 $\frac{1}{4}$ x 2 $\frac{1}{4}$ (502 x 134 x 58)

Full door racks do not fit in half door models.  
Not designed for TSD or GDM models.

\* Not available for freezer models, T-12-HC/T-19-HC/-19G-HC~FGD01/T-35-HC/ T-35G-HC~FGD01, TH-23G~FGD01 or T-23DT-HC freezer section.

\*\* Not available for freezer models, T-12-HC/T-19-HC/-19G-HC~FGD01/T-35-HC/ T-35G-HC~FGD01, TH-23G~FGD01 or T-23DT-HC freezer section. Not available for TPP/deep TUC/TWT-60-HC, 60-32-HC (left door).

\*\*\*Two (2) universal runners accommodate (1) 18" x 26" (458mm x 661mm) or (1) 20" x 12" (505mm x 305mm) pan.

Full Door Bun Tray Rack can utilize 32 universal runners maximum to hold 16 pans. Half Door Bun Tray Rack can utilize 12 universal runners maximum to hold 6 pans.

note: Full door rack features 44 standard runners to hold 22 sheet pans. Maximum capacity is 32, 18" x 26" (458mm x 661mm) sheet pans. Half door bun tray rack features 22 standard runners to hold 11 sheet pans. Maximum capacity is 13, 18" x 26" (458mm x 661mm) sheet pans.

note: In T-Freezers the backguards will have to be removed prior to installing bun tray racks.

### Novelty Basket

Description	Dimensions (W x D x H)
GDM- & T- models 23-HC, 23F-HC, 43F-HC, 49-HC, 49F-HC, 72-HC, 72F-HC (3 dividers std.)	19 $\frac{1}{4}$ x 21 $\frac{3}{4}$ x 5 (489 x 553 x 127)
Extra dividers (each)	
GDM-12-HC~TSL01, 12F-HC~TSL01 & T-models 12-HC, 12F-HC, 12FG-HC~FGD01, 19F-HC, 19FZ- HC (3 dividers std.)	19 $\frac{1}{4}$ x 17 $\frac{1}{2}$ x 5 (489 x 435 x 127)
Extra dividers (each)	

note: Basic models listed; consult factory for specific model compatibility.

### Hanging Novelty Basket

Description
GDM-19T-HC~TSL01/19T-F-HC~TSL01 (Includes 3 Dividers)
GDM-10-HC~TSL01/10F-HC~TSL01/12-HC~TSL01/12F-HC~TSL01 (set of 3, includes dividers)
Extra dividers (each)



Full Bun Tray Rack



Half Bun Tray Rack



Novelty Basket (sits on wire shelf)



Hanging Novelty Basket

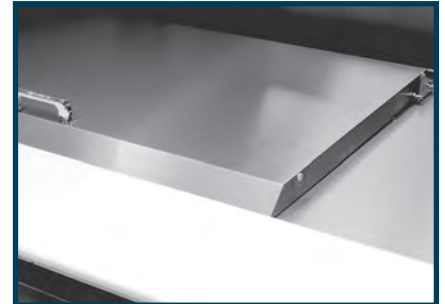


## FLAT LID OPTIONS

### TSSU Models

Description	Number of Lids	Number of Pans
TSSU-27-08-HC	1	8
TSSU-36-08-HC	1	8
TSSU-48-08-HC	1	8
TSSU-48-10-HC	1	10
TSSU-48-12-HC	1	12
TSSU-60-08-HC	1	8
TSSU-60-10-HC	1	10
TSSU-60-12-HC	1	12
TSSU-60-16-HC*	2	8 / 8
TSSU-72-08-HC	1	8
TSSU-72-10-HC	1	10
TSSU-72-12-HC	1	12
TSSU-72-16-HC*	2	8 / 8
TSSU-72-18-HC*	2	10 / 8

\*Unit now becomes a split top with two pan openings.  
 note: Flat lids are factory installed, contact customer service for lead time.

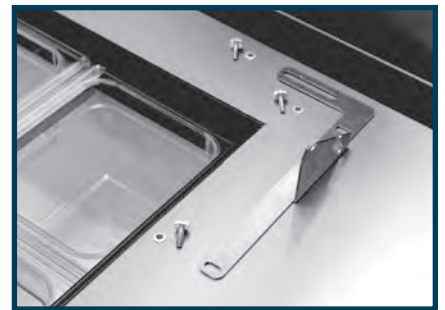


TSSU flat lid option

### TSSU Mega Top Models

Description	Number of Lids	Number of Pans
TSSU-27-12M-B/-C-HC	1	12
TSSU-36-12M-B-HC	1	12
TSSU-48-12M-B-HC	1	12
TSSU-48-15M-B-HC	1	15
TSSU-48-18M-B-HC	1	18
TSSU-60-12M-B-HC	1	12
TSSU-60-15M-B-HC	1	15
TSSU-60-18M-B-HC	1	18
TSSU-60-24M-B-ST-HC	2	12 / 12
TSSU-72-12M-B-HC	1	12
TSSU-72-15M-B-HC	1	15
TSSU-72-18M-B-HC	1	18
TSSU-72-24M-B-ST-HC	2	12 / 12
TSSU-72-30M-B-ST-HC	2	12 / 18

note: Flat lids are factory installed, contact customer service for lead time.



Bracket hardware utilizes existing screw holes.

### TFP Models

Description	Number of Lids	Number of Pans
TFP-32-12M	1	12
TFP-32-12M-D-2	1	12
TFP-48-18M	1	18
TFP-48-18M-D-4	1	18
TFP-64-24M	2	24
TFP-64-24M-D-2	2	24
TFP-64-24M-D-4	2	24
TFP-72-30M	2	30
TFP-72-30M-D-2	2	30
TFP-72-30M-D-6	2	30

note: Flat lids are factory installed, contact customer service for lead time.

## PLEXIGLASS LID OPTION

### TSSU Model

Description
TSSU-27



Plexiglass Lid Option (TSSU-27)

# Accessories | Prep Table Options • Shelf Kits

## FOOD & PIZZA PREP OPTIONS

### SneezeGuard

#### Description

TSSU-27-HC
TSSU-36-HC
TSSU-48-HC
TSSU-60-HC
TSSU-72-HC
TSSU-27 Mega-HC
TSSU-36 Mega-HC
TSSU-48 Mega-HC
TSSU-60 Mega-HC
TSSU-72 Mega-HC

note: Not available for dual sided models.



SneezeGuard

### Garnish Racks

#### Description

#### Number of Racks

TPP-AT-44-HC	1
TPP-AT-60-HC	1
TPP-AT-67-HC	1
TPP-AT2-93-HC	1 set (of 2)
TPP-AT-119-HC	1 set (of 2)
Garnish Rack Pan	18 $\frac{3}{4}$ " x 12 $\frac{7}{8}$ " (477mm x 327mm)



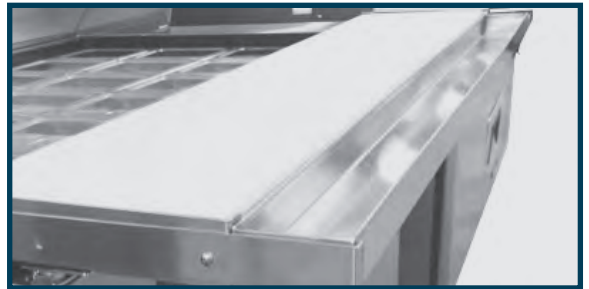
Garnish Rack

### Crumb Catcher

#### Description

TSSU-27-HC
TSSU-36-HC
TSSU-48-HC
TSSU-60-HC
TSSU-72-HC

note: All size crumb catchers require right side bracket (item number 224096) and left side bracket (item number 224097)



Crumb Catcher

### Integrated Toppings Catcher

#### Description

TPP-AT-44-HC
TPP-AT-60-HC
TPP-AT-67-HC
TPP-AT2-93-HC
TPP-AT-119-HC



Integrated Toppings Catcher

## SHELF KITS

### Basic Overshelf

#### Description

#### Dimensions (W x D x H)

TSSU/TUC/TWT-27-HC	25 $\frac{1}{2}$ x 9 x 14 $\frac{3}{8}$ (639 x 229 x 366)
TSSU/TUC/TWT-36-HC	34 $\frac{1}{8}$ x 9 x 14 $\frac{3}{8}$ (866 x 229 x 366)
TSSU/TUC/TWT-48-HC	46 $\frac{1}{8}$ x 9 x 14 $\frac{3}{8}$ (1170 x 229 x 366)
TSSU/TUC/TWT-60-HC	58 $\frac{1}{8}$ x 9 x 14 $\frac{3}{8}$ (1475 x 229 x 366)

Made of heavy-gauge stainless steel.

note: Overshelf not available for TWT/TUC-60-32. Overshelf not available for dual sided models.  
note: Height dimension from countertop to shelf top.



Basic Overshelf (TSSU/TUC/TWT)

## SHELF KITS (cont.)

### Sandwich/Salad Service Shelf (TSSU/TUC/TWT)

Description	Dimensions (W x D x H)
TSSU-36/TUC/TWT-36-HC	36 $\frac{3}{8}$ x 12 x 14 $\frac{1}{4}$ (913 x 305 x 326)
TSSU/TUC/TWT-48-HC	48 $\frac{3}{8}$ x 12 x 14 $\frac{1}{4}$ (1236 x 305 x 326)
TSSU/TUC/TWT-60-HC	60 $\frac{3}{8}$ x 12 x 14 $\frac{1}{4}$ (1540 x 305 x 326)
TSSU/TUC/TWT-72-HC	72 $\frac{3}{8}$ x 12 x 14 $\frac{1}{4}$ (1845 x 305 x 326)

Made of heavy-gauge stainless steel.  
Sandwich/salad service shelf not available for Non Dual Sided Mega-Tops.  
note: Service shelf not available for TSSU-60-16-HC, TSSU-60-16-DS-ST-HC, TUC/TWT-60-32-HC.  
note: For use with dual sided, mega-top units, pan lids must be removed, lids will not hinge open.  
note: Height dimension from countertop to shelf top.



Sandwich/Salad Service Shelf (TSSU/TUC/TWT)

### Pizza Prep Service Shelf

Description	Dimensions (W x D x H)
TPP-AT-44-HC	44 x 17 $\frac{7}{8}$ x 18 $\frac{1}{8}$ (1118 x 455 x 461)
TPP-AT-60-HC	60 $\frac{5}{8}$ x 17 $\frac{7}{8}$ x 18 $\frac{1}{8}$ (1540 x 455 x 461)
TPP-AT-67-HC	67 $\frac{7}{8}$ x 17 $\frac{7}{8}$ x 18 $\frac{1}{8}$ (1718 x 455 x 461)
TPP-AT2-93-HC	93 $\frac{3}{8}$ x 17 $\frac{7}{8}$ x 18 $\frac{1}{8}$ (2379 x 455 x 461)

Made of heavy-gauge stainless steel.  
note: Height dimension from countertop to shelf top.

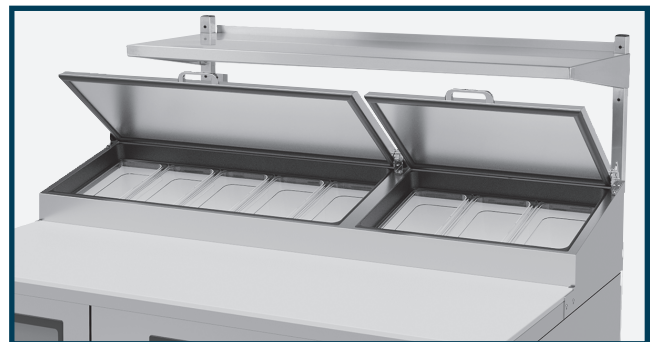


Pizza Prep Service Shelf (TPP only)

### OverShelf Kits (Single/Double)

Description	Dimensions (W x D x H*)
<b>SINGLE OVERSHELVES</b>	
TSSU/TUC/TWT-27 & Mega-HC	27 $\frac{3}{8}$ x 16 x 20 $\frac{1}{2}$ (702 x 407 x 509)
TSSU/TUC/TWT-36 & Mega-HC	36 $\frac{3}{8}$ x 16 x 20 $\frac{1}{2}$ (624 x 407 x 509)
TSSU/TUC/TWT-48 & Mega-HC	48 $\frac{3}{8}$ x 16 x 20 $\frac{1}{2}$ (1229 x 407 x 509)
TSSU/TUC/TWT-60 & Mega-HC	60 $\frac{3}{8}$ x 16 x 20 $\frac{1}{2}$ (1534 x 407 x 509)
TSSU/TUC/TWT-72 & Mega-HC	72 $\frac{3}{8}$ x 16 x 20 $\frac{1}{2}$ (1839 x 407 x 509)
TPP/TUC/TWT-44-HC	44 $\frac{3}{8}$ x 16 x 20 $\frac{1}{2}$ (1134 x 407 x 509)
TPP-AT-60, TUC/TWT-60-32-HC	60 $\frac{3}{8}$ x 16 x 20 $\frac{1}{2}$ (1534 x 407 x 509)
TPP-AT/TUC/TWT-67-HC	67 $\frac{3}{8}$ x 16 x 20 $\frac{1}{2}$ (1712 x 407 x 509)
TFP-32	32 $\frac{3}{8}$ x 16 x 43 $\frac{1}{2}$ (823 x 407 x 1105)
TFP-48	48 $\frac{3}{8}$ x 16 x 43 $\frac{1}{2}$ (1229 x 407 x 1105)
TFP-64	64 $\frac{3}{8}$ x 16 x 43 $\frac{1}{2}$ (1636 x 407 x 1105)
TFP-72	72 $\frac{3}{8}$ x 16 x 43 $\frac{1}{2}$ (1839 x 407 x 1105)
<b>DOUBLE OVERSHELVES</b>	
TSSU/TUC/TWT-27 & Mega-HC	27 $\frac{3}{8}$ x 16 x 33 $\frac{1}{2}$ (702 x 407 x 509)
TSSU/TUC/TWT-36 & Mega-HC	36 $\frac{3}{8}$ x 16 x 33 $\frac{1}{2}$ (624 x 407 x 509)
TSSU/TUC/TWT-48 & Mega-HC	48 $\frac{3}{8}$ x 16 x 33 $\frac{1}{2}$ (1229 x 407 x 509)
TSSU/TPP/TUC/TWT-60-HC & Mega/ TUC/TWT-60-32-HC	60 $\frac{3}{8}$ x 16 x 33 $\frac{1}{2}$ (1534 x 407 x 509)
TSSU/TUC/TWT-72 & Mega-HC	72 $\frac{3}{8}$ x 16 x 33 $\frac{1}{2}$ (1839 x 407 x 509)
TPP-AT-44 & TUC/TWT-44-HC	44 $\frac{3}{8}$ x 16 x 33 $\frac{1}{2}$ (1134 x 407 x 509)
TPP-AT-67 & TUC/TWT-67-HC	67 $\frac{3}{8}$ x 16 x 33 $\frac{1}{2}$ (1712 x 407 x 509)
TFP-32	32 $\frac{3}{8}$ x 16 x 56 $\frac{1}{2}$ (823 x 407 x 1436)
TFP-48	48 $\frac{3}{8}$ x 16 x 56 $\frac{1}{2}$ (1229 x 407 x 1436)
TFP-64	64 $\frac{3}{8}$ x 16 x 56 $\frac{1}{2}$ (1636 x 407 x 1436)
TFP-72	72 $\frac{3}{8}$ x 16 x 56 $\frac{1}{2}$ (1839 x 407 x 1436)

Made of heavy-gauge stainless steel.  
\* maximum height, single overshelves and lower shelf on double overshelves are adjustable.  
note: Overshelves not available for dual sided models. Overshelves not available for TPP-AT-93 or -119 models.



TPP-AT-60-HC (single overshelf)



TSSU-48-12-HC (double overshelf)

# Accessories | Castors & Legs

## CASTORS & LEGS

### Stem Castors & Legs

#### Description

GDM, TOAM, TVM, T-Series, Spec Series, Food Prep, TUC/TWT (set of 4)

GDM, TOAM, TVM, T-Series, Spec Series, Food Prep, TUC/TWT (set of 6)

TRCB (set of 4 - Legs only)

TRCB (set of 6 - Legs only)

TPP-AT-119-HC & TRCB-110 require 2 sets of 4

Castors are not available on GDM-05-HC-LD, GDM-05PT-HC-LD, GDM-07-HC~TSL01, GDM-09-SQ-HC-LD, hard wired models, & two section heated cabinets. Legs are not available on T-12-HC, T-12F-HC, T-12G-HC~FGD01/-12FG-HC~FGD01, GDM-10-HC~TSL01/-10F-HC~TSL01, GDM-12-HC~TSL01/GDM-12F-HC~TSL01/-12FC-HC~TSL01, GDM-33SSL-54-LD, TAC's, TDD-1/-5.



1 1/2" (39mm) Castor



2 1/2" (64mm) Castor



3" (77mm) Castor



4" (102mm) Castor



5" (127mm) Castor



6" (153mm) Leg



6" (153mm) Seismic/Flanged Leg

## CASTORS & LEGS (cont.)

### Plate Castors

#### Description

T-50-GC-HC, TD-50-18-HC, TD-65-24-HC, TD-80-30-HC, TBB/TDD-2-HC, TBB/TDD-3-HC, TBB24-48/60/72-HC - 2½" (64mm) (set of 4)

TD-95-38-HC, TBB/TDD-4-HC - 2½" (64mm) (set of 4)

T-50-GC-HC, TD-50-18-HC, TD-65-24-HC, TD-80-30-HC, TBB/TDD-2-HC, TBB/TDD-3-HC, TBB24-48/60/72-HC - 3" (77mm) (set of 4)

TD-95-38-HC, TBB/TDD-4-HC - 3" (77mm) (set of 6)

TRCB (set of 4)

TRCB (set of 6)



Plate Castor

### Stacking Collar

#### Description

TUC-27-HC, 27F-HC

True's stacking collar provides a space-efficient freezer and refrigerator combination in a 27½" x 30" (699mm x 726mm) footprint. Includes anti-tip bracket and 6" (153mm) seismic legs.



Stacking Collar

# Accessories | Cutting Boards

## CUTTING BOARDS

### TSSU - White Polyethylene

Description	Dimensions (W x D)
19" (438mm) CUTTING BOARDS* - 1/2" (13mm) THICK (requires "L" brackets)	
TSSU-27-HC	27½ x 19 (699 x 483)
TSSU-36-HC	36 x 19 (915 x 483)
TSSU-48-HC	48 x 19 (1220 x 483)
TSSU-60-HC	60 x 19 (1524 x 483)
TSSU-72-HC	72 x 19 (1956 x 483)
19" (438mm) CUTTING BOARDS* - 3/4" (19mm) THICK (requires "L" brackets)	
TSSU-27-HC	27½ x 19 (699 x 483)
TSSU-48-HC	48 x 19 (1220 x 483)
TSSU-60-HC	60 x 19 (1524 x 483)
TSSU-72-HC	72 x 19 (1956 x 483)
"L" Brackets for 19" (438mm) Cutting Board (set) w/out rivnut tool	
"L" Brackets for 19" (438mm) Cutting Board (set) w/rivnut tool	

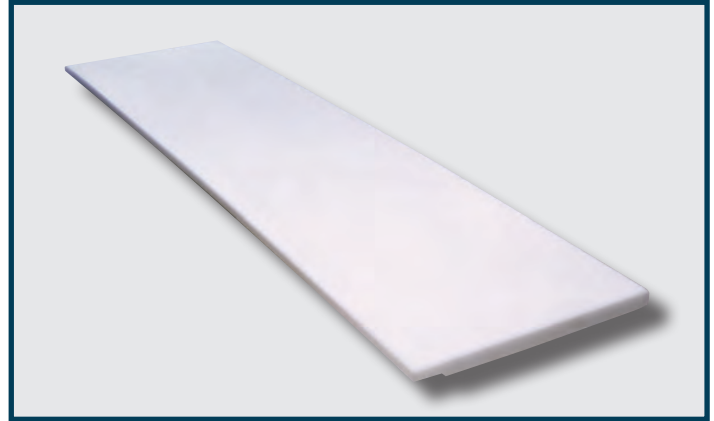
\* 19" (483mm) cutting boards not available for TSSU with drawers, dual sided or mega top models.

### TPP - White Polyethylene

Description	Dimensions (W x D)
19½" (496mm) CUTTING BOARDS - 1/2" (13mm) THICK (use existing brackets)	
TPP-AT-44-HC	44¼ x 19½ (1124 x 496)
TPP-AT-60-HC	60 x 19½ (1524 x 496)
TPP-AT-67-HC	67 x 19½ (1702 x 496)
TPP-AT2-93-HC	93 x 19½ (2363 x 496)
TPP-AT-119-HC	119 x 19½ (3023 x 496)

### TUC & TWT - White Polyethylene

Description	Dimensions (W x D)
FULL TOP CUTTING BOARDS 1/2" (13mm) THICK (requires brackets)	
TUC-27-HC	27½ x 30 (699 x 762)
TUC-36-HC	36½ x 30 (915 x 762)
TUC-44-HC	44¼ x 32½ (1124 x 816)
TUC-48-HC	48 x 30 (1220 x 762)
TUC-60-HC	60 x 30 (1524 x 762)
TUC-60-32-HC	60 x 32½ (1524 x 816)
TUC-67-HC	67 x 32½ (1702 x 816)
TUC-72-HC	72 x 30 (1829 x 762)
TUC-93-HC	93¼ x 32½ (2369 x 816)
TWT-27-HC	27½ x 28¼ (699 x 718)
TWT-36-HC	36 x 28¼ (915 x 718)
TWT-44-HC	44¼ x 30 (1124 x 762)
TWT-48-HC	48 x 28¼ (1220 x 718)
TWT-60-HC	60 x 28¼ (1524 x 718)
TWT-60-32-HC	60 x 30 (1524 x 762)
TWT-67-HC	67 x 30w (1702 x 762)
TWT-72-HC	72 x 28¼ (1829 x 718)
TWT-93-HC	93¼ x 30 (2369 x 762)
"L" Brackets for TUC & TWT Cutting Board (set) w/out rivnut tool	
"L" Brackets for TUC & TWT Cutting Board (set) w/rivnut tool	



White, polyethylene cutting board.



White, polyethylene cutting board on cooler.

## CUTTING BOARDS

### TSSU - Composite

Description	Dimensions (W x D)
8 <sup>7</sup> / <sub>8</sub> " (226mm) CUTTING BOARDS - 1/2" (13mm) THICK (no special brackets required)	
TSSU-27-HC	27 <sup>1</sup> / <sub>2</sub> x 19 (699 x 483)
TSSU-36-HC	36 x 19 (915 x 483)
TSSU-48-HC	48 x 19 (1220 x 483)
TSSU-60-HC	60 x 19 (1524 x 483)
TSSU-72-HC	72 x 19 (1956 x 483)
11 <sup>1</sup> / <sub>4</sub> " (299mm) CUTTING BOARDS - 1/2" (13mm) THICK (requires "L" brackets - Mega)	
TSSU-27-HC	27 <sup>1</sup> / <sub>2</sub> x 19 (699 x 483)
TSSU-36-HC	36 x 19 (915 x 483)
TSSU-48-HC	48 x 19 (1220 x 483)
TSSU-60-HC	60 x 19 (1524 x 483)
TSSU-72-HC	72 x 19 (1956 x 483)
"L" Brackets for TSSU Mega Cutting Board (set) w/out rivnut tool	
"L" Brackets for TSSU Mega Cutting Board (set) w/rivnut tool	
19" (483mm) CUTTING BOARDS* - 1/2" (13mm) THICK (requires "L" brackets)	
TSSU-27-HC	27 <sup>1</sup> / <sub>2</sub> x 19 (699 x 483)
TSSU-36-HC	36 x 19 (915 x 483)
TSSU-48-HC	48 x 19 (1220 x 483)
TSSU-60-HC	60 x 19 (1524 x 483)
TSSU-72-HC	72 x 19 (1956 x 483)
"L" Brackets for 19"(483mm) Cutting Board (set) w/out rivnut tool	
"L" Brackets for 19"(483mm) Cutting Board (set) w/rivnut tool	

\* 19" (483mm) cutting boards not available for TSSU with drawers, dual sided or mega top models.

### TFP - Composite

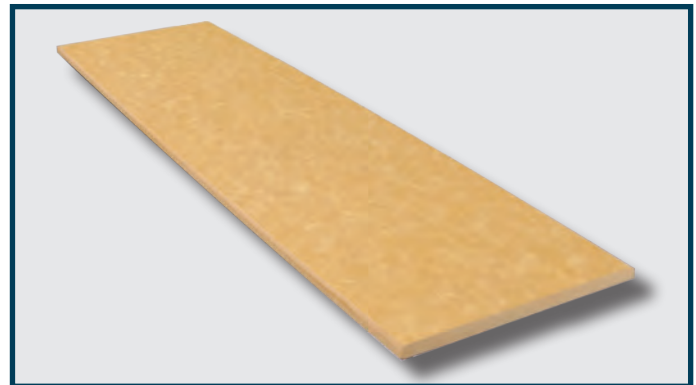
Description	Dimensions (W x D)
8" (204mm) CUTTING BOARDS - 1/2" (13mm) THICK (use existing brackets)	
TFP-32M	32 x 8 (813 x 204)
TFP-48M	48 x 8 (1220 x 204)
TFP-64M	64 x 8 (1626 x 204)
TFP-72M	72 x 8 (1829 x 204)

### TPP - Composite

Description	Dimensions (W x D)
19 <sup>1</sup> / <sub>2</sub> " (496mm) CUTTING BOARDS - 1/2" (13mm) THICK (use existing brackets)	
TPP-AT-44-HC	44 <sup>1</sup> / <sub>4</sub> x 19 <sup>1</sup> / <sub>2</sub> (1124 x 496)
TPP-AT-60-HC	60 x 19 <sup>1</sup> / <sub>2</sub> (1524 x 496)
TPP-AT-67-HC	67 x 19 <sup>1</sup> / <sub>2</sub> (1702 x 496)
TPP-AT2-93-HC	93 x 19 <sup>1</sup> / <sub>2</sub> (2363 x 496)
TPP-AT-119-HC	119 x 19 <sup>1</sup> / <sub>2</sub> (3023 x 496)

### TUC & TWT - Composite

Description	Dimensions (W x D)
FULL TOP CUTTING BOARDS 1/2" (13mm) THICK (requires brackets)	
TUC-27-HC	27 <sup>1</sup> / <sub>2</sub> x 30 (699 x 762)
TUC-36-HC	36 <sup>1</sup> / <sub>2</sub> x 30 (915 x 762)
TUC-44-HC	44 <sup>1</sup> / <sub>4</sub> x 32 <sup>1</sup> / <sub>2</sub> (1124 x 816)
TUC-48-HC	48 x 30 (1220 x 762)
TUC-60-HC	60 x 30 (1524 x 762)
TUC-60-32-HC	60 x 32 <sup>1</sup> / <sub>2</sub> (1524 x 816)
TUC-67-HC	67 x 32 <sup>1</sup> / <sub>2</sub> (1702 x 816)
TUC-72-HC	72 x 30 (1829 x 762)
TUC-93-HC	93 <sup>1</sup> / <sub>4</sub> x 32 <sup>1</sup> / <sub>2</sub> (2369 x 816)
TWT-27-HC	27 <sup>1</sup> / <sub>2</sub> x 28 <sup>1</sup> / <sub>4</sub> (699 x 718)
TWT-36-HC	36 x 28 <sup>1</sup> / <sub>4</sub> (915 x 718)
TWT-44-HC	44 <sup>1</sup> / <sub>4</sub> x 30 (1124 x 762)
TWT-48-HC	48 x 28 <sup>1</sup> / <sub>4</sub> (1220 x 718)
TWT-60-HC	60 x 28 <sup>1</sup> / <sub>4</sub> (1524 x 718)
TWT-60-32-HC	60 x 30 (1524 x 762)
TWT-67-HC	67 x 30w (1702 x 762)
TWT-72-HC	72 x 28 <sup>1</sup> / <sub>4</sub> (1829 x 718)
TWT-93-HC	93 <sup>1</sup> / <sub>4</sub> x 30 (2369 x 762)
"L" Brackets for TUC & TWT Cutting Board (set) w/out rivnut tool	
"L" Brackets for TUC & TWT Cutting Board (set) w/rivnut tool	



Composite cutting board.



Composite cutting board on cooler.

## CONTROLS & DISPLAYS

### Digital Display

Description
TSSU/TUC/TWT (-27-HC, -36-HC, -48-HC, -60-HC, -72-HC) - RECTANGULAR
Fahrenheit/Celsius
TPP/DEEP TUC/DEEP TWT (-44-HC, -60-32-HC, -67-HC, -93-HC, -119-HC) - ROUND
Fahrenheit
Celsius

### Thermostat

Description
Chocolate Thermostat 50°F to 55°F (10°C to 13°C)
Red Wine Thermostat 50°F to 55°F (10°C to 13°C)
White Wine Thermostat 45°F to 50°F (7°C to 10°C)

### Chocolate/Wine Controls

Description
CW - Must specify Chocolate, Red or White Wine temperature setting



Digital display (TSSU, TFP, TPP, TUC & TWT).  
note: TSSU's equipped with crumb catcher option, Digital Display will not be visible.

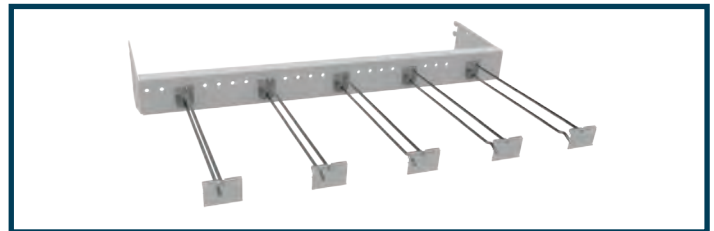


Wine or Chocolate Thermostat

## TRM ACCESSORIES

### Peg Hooks

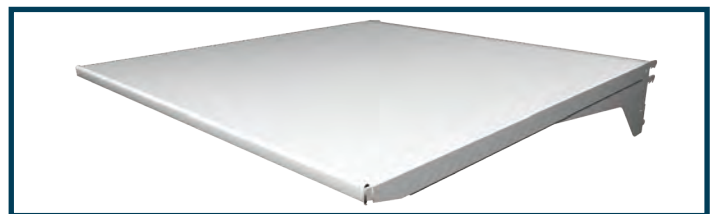
Description	Spacing between pegs
5 pegs	5" (127mm)
6 pegs	4.5" (115mm)
10 pegs	2" (51mm)



Peg Hooks

### Shelves

Description	Dimensions (W x D x H)
Solid Cantilever Shelf	30¼ x 25½ x 7/8 (769 x 648 x 23)



Solid Cantilever Shelf

### Corner Kits

Description
Corner Kit (black)



Corner Kit (top)



Corner Kit (Bottom)



## OPEN AIR & AIR CURTAIN ACCESSORIES

### Night Cover\*

Description
TAC NIGHT COVERS
TAC-14GS-HC-LD
THAC NIGHT COVERS
THAC-36-LD (White)
THAC-36-LD (Black)
THAC-36-S-LD (Stainless)
THAC-48-LD (White)
THAC-48-LD (Black)
THAC-48-S-LD (Stainless)
THAC-60-LD (White)
THAC-60-LD (Black)
THAC-60-S-LD (Stainless)

\* Night Cover is UL approved with heavy duty return mechanism.  
note: Night Cover is standard on TOAM models.

### Locking Security Cover\*

Description
TOAM-30-HC
TOAM-36-HC
TOAM-48-HC
TOAM-72-HC

\* Security cover is not UL approved.  
note: Locking security cover adds 6¾" (171mm) to cabinet height. Not available for glass sided models. Factory installed only with some field assembly required.

### Vandal Cover Panel\*

Description
TOAM-30-HC
TOAM-36-HC
TOAM-48-HC
TOAM-72-HC

\* Locking removable panel.  
note: Not available for glass sided models. Factory installed only with upcharge.

### Condensate Heater Pan/Bracket Kits

Description
TOAM-30-HC
TOAM-36-HC
TOAM-48-HC
TOAM-72-HC

note: Black back screen also available, contact factory.

### THAC Bumper Guard Kit

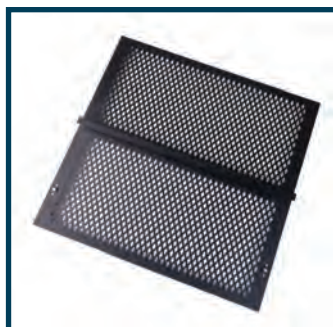
Description
THAC-36-HC-LD
THAC-48-HC-LD
THAC-60-HC-LD



Night cover. Standard on TOAM models.



Locking security cover (black).



Vandal Cover Panel.



Cover Open.



Silver.



White.



Condensate Heater Pan/Bracket Kit (pictured without back screen).

# Accessories | Draft Options

## DRAFT OPTIONS

### Faucet Draft Columns

Description
Single round faucet draft column
Double round faucet round draft column
Triple round faucet round draft column
Single round nitro draft column
Double round nitro draft column
Nitro/Cold brew combo round nitro draft column
Triple faucet T-style draft column
Quad faucet T-style draft column
Draft column hole cover cap*

\* Used when draft standard not required (covers hole on countertop).



Single Round



Double Round



Triple Round



Single Nitro



Double Nitro



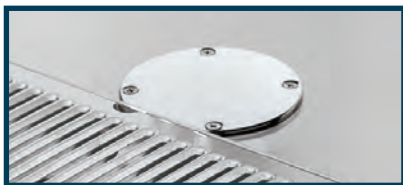
Nitro/Cold Brew



T-Style Triple



T-Style Quad



Draft Column Hole Cover Cap

### Nitro Kits

Description
INDIVIDUALIZED NOMENCLATURE FOR TDD-1-HC VERSIONS
Nitro Coffee Single-Tap Kit (1 keg / 1 pressure)
Cold Brew Coffee Single-Tap Kit (1 keg / 1 pressure)
Nitro Coffee Double-Tap Kit (2 keg / 1 pressure)
Cold Brew Coffee Double-Tap Kit (2 keg / 1 pressure)
Nitro & Cold Brew Combination Double-Tap Kit (2 keg / 2 pressure)



Single Cold Brew Kit



Double Cold Brew Kit



Single Nitro Kit



Nitro/Cold Brew  
Combo Kit



Double Nitro Kit

## PREMIER BAR

### Manifolds

#### Description

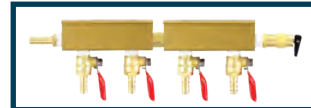
- Two-way manifold
- Three-way manifold
- Four-way manifold



Two-way Manifold



Three-way Manifold



Four-way Manifold

### Spill Pans & Grates

#### Description

- 7" (178mm) Spill pan/grate
- 11" (280mm) Spill pan/grate
- 15" (381mm) Spill pan/grate (standard)
- 19" (483mm) Spill pan/grate
- 23" (585mm) Spill pan/grate
- 27" (686mm) Spill pan/grate
- 31" (788mm) Spill pan/grate
- 35" (889mm) Spill pan/grate



Spill Pan/Grate

### Access Port Plugs

#### Description

- Access Port Plugs



Access Port Plugs

### Locks

#### Description

- Barrel Lock
- Ratchet Lock



Ratchet & Barrel Locks



Drain Bottle & Hanging Bracket

### Draft Drain Bottle

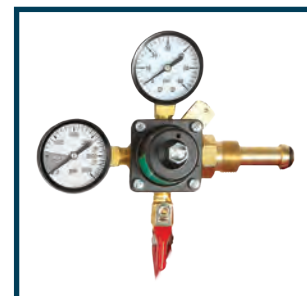
#### Description

- Draft Drain Bottle & Hanger/Bracket

### CO<sub>2</sub> Pressure Regulator

#### Description

- CO<sub>2</sub> Pressure Regulator

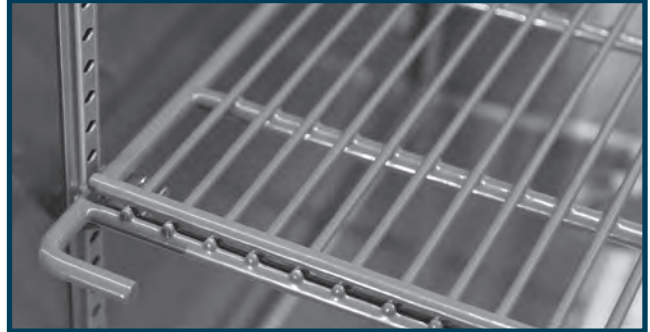


CO<sub>2</sub> Pressure Regulator

## PREMIER BAR (cont.)

### Shelving Options

Description
Gray Wire Shelves
Black Wire Shelves
Gray Cutout Wire Shelves
Black Cutout Wire Shelves
Wine Shelves
Premier Bar Organizers



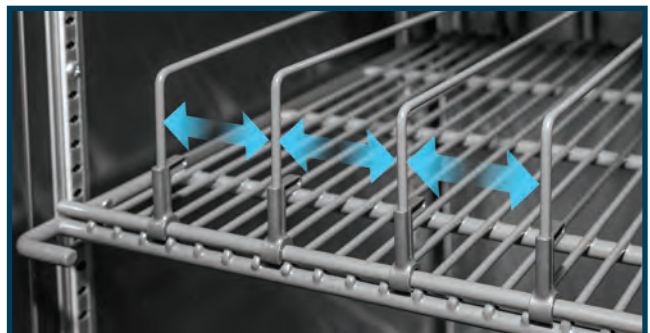
Gray Wire Shelf



Gray Cutout Wire Shelf



Wine Shelf



Premier Bar Organizers

## COMMERCIAL ICE ACCESSORIES

### Water Filters

#### Description

Standard Water Filter Assembly	14,000 gal (52996 L)
Platinum Water Filter Assembly	35,000 gal (132490 L)



Standard Water Filter



Platinum Water Filter

### TrueZone™ Growth Inhibitor

#### Description

TrueZone™ Growth Inhibitor
----------------------------

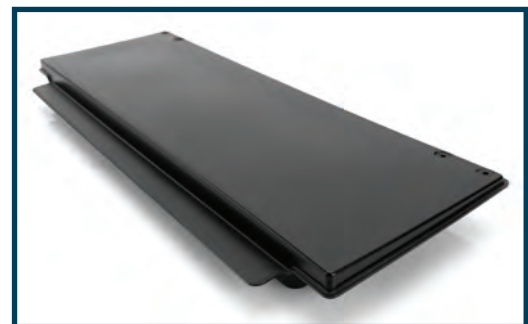


TrueZone™ Growth Inhibitor Unit and Bulb.

### Adaptor Top

#### Description

8" (204mm) Adaptor Top - 22" (559mm) Head on 30" (762mm) Bin
--



8" Adaptor Top

# Accessories | TDM/TGM Options

## TDM/TGM OPTIONS

### *TDM Rear Ratchet Locks (kit) & Front Glass Barrel Lock (frontal glass)*

#### Description

All TDM models

note: Factory installed only.



Ratchet lock.



Front glass lock.

### *Top Service Shelves*

#### Description

TDM/TGM-36/48/59/77 Scale Shelf

TDM/TGM-36/48/59 Small Top Service Shelf

TDM/TGM-77 Small Top Service Shelf

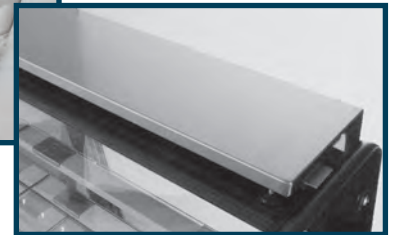
TDM/TGM-36/48/59/77 Medium Top Service Shelf

TDM/TGM-48/59/77 Large Top Service Shelf (Not Available on TDM/TGM-36)

note: Factory installed only.



Scale shelf



Top service shelf

### *Banking Kit*

#### Description

All TDM/TGM models

### *Electrical Receptacle*

#### Description

TDM-36/TGM-36

TDM-48/ TGM-48

TDM-59/TGM-59

TDM-77/TGM-77

note: Factory installed only.



TDM banking kit.



Electrical Receptacle

### *External Front Shelf Kit (black only)*

#### Description

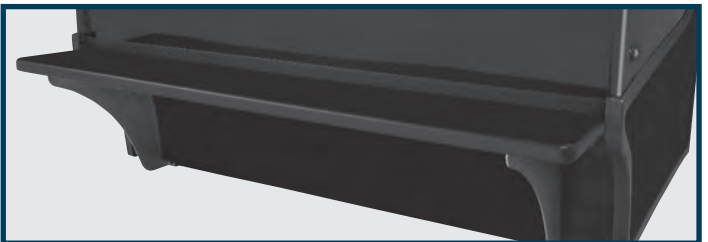
TDM-36/TGM-36

TDM-48/ TGM-48

TDM-59/TGM-59

TDM-77/TGM-77

note: Factory installed only.



External front shelf

### *External Rear Shelf Kit (black only)*

#### Description

TDM-36/TGM-36

TDM-48/ TGM-48

TDM-59/TGM-59

TDM-77/TGM-77

note: Factory installed only.



External rear shelf

## Clear Glass Shelves Assembly

### Description

TDM & TGM-R-36 / TDM & TGM-DC-36  
 TDM & TGM-R-48 / TDM & TGM-DC-48  
 TDM & TGM-DZ-48  
 TDM & TGM-R-59 / TDM & TGM-DC-59  
 TDM & TGM-DZ-59  
 TDM & TGM-R-77 / TDM & TGM-DC-77  
 TDM & TGM-DZ-77

note: Kit includes three (3) levels of shelving.

## Frosted Glass Shelves Assembly

### Description

TDM & TGM-R-36 / TDM & TGM-DC-36  
 TDM & TGM-R-48 / TDM & TGM-DC-48  
 TDM & TGM-DZ-48  
 TDM & TGM-R-59 / TDM & TGM-DC-59  
 TDM & TGM-DZ-59  
 TDM & TGM-R-77 / TDM & TGM-DC-77  
 TDM & TGM-DZ-77

note: Kit includes three (3) levels of shelving.

## Stainless Steel Shelves Assembly (mezzanine)

### Description

TDM & TGM-R-36 / TDM & TGM-DC-36  
 TDM & TGM-R-48 / TDM & TGM-DC-48  
 TDM & TGM-DZ-48  
 TDM & TGM-R-59 / TDM & TGM-DC-59  
 TDM & TGM-DZ-59  
 TDM & TGM-R-77 / TDM & TGM-DC-77 (top/middle/bottom)  
 TDM & TGM-DZ-77

note: Kit includes three (3) levels of shelving.

## Chrome Shelves Assembly

### Description

TDM & TGM-R-36 / TDM & TGM-DC-36  
 TDM & TGM-R-48 / TDM & TGM-DC-48  
 TDM & TGM-DZ-48  
 TDM & TGM-R-59 / TDM & TGM-DC-59  
 TDM & TGM-DZ-59  
 TDM & TGM-R-77 / TDM & TGM-DC-77 (top/middle/bottom)  
 TDM & TGM-DZ-77

note: Kit includes three (3) levels of shelving.

## Castors

### Description

ALL TDM & TGM-36/48/59 MODELS (not available for 77 models)  
 4" (102mm) castor kit  
 2½" (64mm) castor kit

## Legs

### Description

ALL TDM & TGM-36/48/59 MODELS (not available for 77 models)  
 6" (153mm) castor kit



Glass Shelves



Frosted Glass Shelves



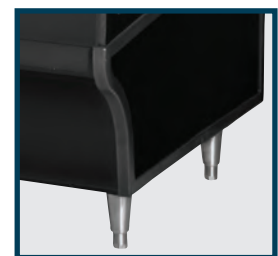
Stainless Steel Shelves (mezzanine)



Chrome Shelves



4" (102 mm) castors



6" (153 mm) legs

## LOCKS

### Ratchet Locks (factory installed)

Description	Number of Locks
Each GDM, TSD (2 door slide models)	1
Each GDM-69-HC-LD, TSD-69	2
Each TDM (rear doors)	1
Each TGM	1
Each TCGG	1
Each TBB (2 door slide models)	1
Each TBB (3 door slide models)	2

### Barrel Locks (factory installed)

Description
GDM / FLM (one door)*
GDM / FLM (two door)
GDM / FLM (three door)
GDM, TSD (slide two door models)

\*Available only for one-door swing and slide two door refrigerators (not available for GDM-09-SQ-HC-LD).  
Not available for ice merchandisers.

### Bolt Locks (factory installed)

Description
TSSU/TUC/TWT/TPP/TFP (per door section - one lock)
TSSU/TUC/TWT/TPP/TFP/TRCB (per drawers section - two locks)

### Padlocks

Description
GDM (two swing door models)



Padlock



Ratchet Lock

Ratchet Lock Kit



Barrel Lock



Barrel Lock Kit



## ADDITIONAL ACCESSORIES

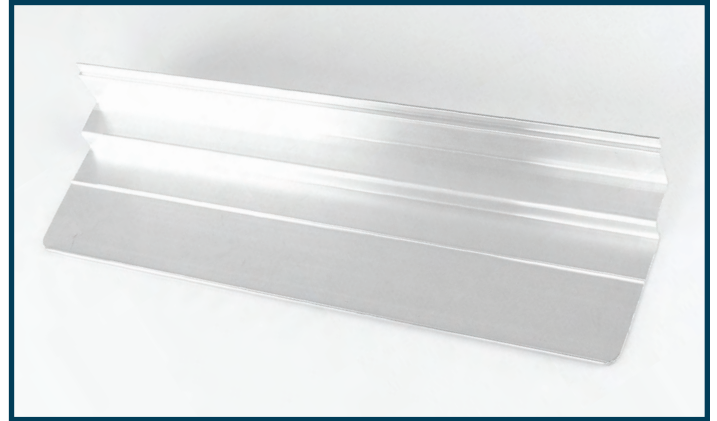
### Tray Slides

**Description**

Deep TUC

Deep TWT

Deep TPP



Tray Slides

### Corner Brackets

**Description**

Flat Top TRCB



Corner Brackets (Flat top TRCB)

### Corner Bumpers

**Description**

TMC



Corner Bumpers (TMC)

# ACCESSORIES

---

True offers a large variety of accessories to compliment our cabinets, meeting the needs of our customers to customize their equipment for function and practicality in the busiest of locations.